

Intersec Booth: **SA-N10**
16-18th Jan, 2024 Dubai, UAE

ISE Booth: **5K930**
30 Jan - 2 Feb, 2024 Barcelona, Spain

Getshow Booth: **19.1C6**
3-6th Mar, 2024 Guangzhou, China

Infocomm China Booth: **Hall E, EJ2-01**
17-19th Apr, 2024 Beijing, China

Prolight & Sound Guangzhou Booth: **Hall 1.2-B52**
23-26th May, 2024 Guangzhou, China

Infocomm Asia Booth: **D30**
17-19th Jul, 2024 Bangkok, Thailand

The 21th Shanghai International Public Safety Expo Booth: **W1A258**
26-28th Jul, 2024 Shanghai, China

Security China 2024 Booth: **W1E21**
22-25th Oct, 2024 Beijing, China

Intersec 2025
14-16th Jan, 2025 Dubai, UAE

ISE 2025
4-7th Feb, 2025 Barcelona, Spain



Guangzhou DSPPA Audio Co., Ltd.

Address
NO.1 Xiahe Road, Jianggao, Baiyun,
Guangzhou, Guangdong, China

Email
export@dsppa.com
info@dsppa.com

Tel
+86-20-37166520

Website
www.dsppatech.com



PA SYSTEMS CATALOGUE

Leading Manufacturer
for PA/VA SYSTEM



Concentrating on audio since 1988



Guangzhou **DSPPA Audio** Co., Ltd. is a professional audio manufacturer since 1988. With more than 35 years' history of designing and manufacturing professional audio & video products, DSPPA has enjoyed a high reputation in and out of China. Technology innovations, strict quality and environment control (ISO 9001 & ISO14000) and market-oriented products have made DSPPA to be the leading brand in the field of public address system and conference system. As the chief editor of the Technical Standard for Public Address System Engineering of China, DSPPA is widely recognized as the largest and most professional audio equipment supplier in China.

- » DSPPA Production Range
- » PA Amplifiers and Speakers
- » IP Network PA System
- » EN54 Voice Evacuation System
- » Intelligent Conference System
- » Professional Audio System
- » Long Range Acoustic System
- » Commercial WiFi Audio System
- » HD Audio & Video System

Factory 85000 m ² + 2 production centers	Head office 20000 m ²	Warehouse 6000 m ²	Factory 500+ people	Sales Team 300+ people	QC Dept 80+ people	R&D Engineers 260+ people
--	--	---	-------------------------------	----------------------------------	------------------------------	---



Product Advantage
Wide range of products and adequate stocks

Production Advantage
Automatic production and strict quality control

Technology Advantage
Outstanding technological innovation capability, hundreds of patents

Design Advantage
Brilliant R&D team, OEM/ODM available

Service Advantage
Professional pre-sales & after-sales service, strong technical support

Logistics Advantage
Large warehouse and sufficient worker to ensure fast and timely delivery

2022 HANGZHOU ASIAN GAMES

The Official Supplier of Audio Equipment for Two Consecutive Asian Games



Official Supplier for the Asian Games Hangzhou 2022
Official Supplier of Audio Equipment for the 19th Asian Games Hangzhou 2022



2018 JAKARTA ASIAN GAMES



The Official Support Partner of the 18th Asian Games
The Exclusive Public Address and Intelligent Conference System of the 18th Asian Games



The 18th Asian Games, also known as Jakarta Palembang 2018, is a Pan-Asian multi-sport event held in Jakarta and Palembang, Indonesia from 18 August to 2 September, 2018. Due to the popularity and reputation of its products, DSPPA becomes the official support partner and the exclusive supplier of the public address and intelligent conference system for the event. A large amount of PA audio equipment is sponsored to venues across four provinces in Indonesia: Jakarta, South Sumatra, Banten, and West Java. Better PA service is provided by DAPPA for the 18th Asian Games.



PAVA9500
Integrated Voice Evacuation PA System

PAVA8500
Dante Integrated Voice Evacuation PA System

Compact Wall-mount
Voice Evacuation System



MAG808
8x8 Digital Audio Matrix System

MAG2120II / MAG2140II
Intelligent PA System

4G Cloud Network
Wireless PA System



MAG6000
IP Network PA System



Long Range Acoustic Hailing System



DSP9000
Network PA & Intercom System

MAG2400
Dante Network PA System



AI Audiovisual Experience Center

R & D



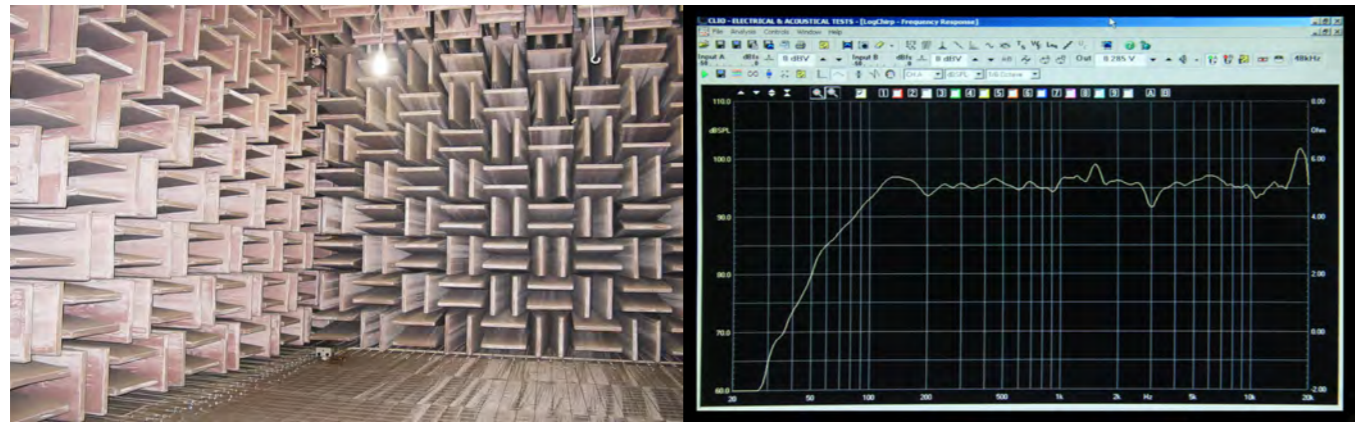
20 R&D teams, 200+ engineers

AUTOMATIC PRODUCTION

DSPPA intends to be the most advanced global PA& Conference enterprise by continuous technical innovation and advanced quality management. Welcome to cooperate with us at all levels of collaborations, such as trades, distributions, OEM, ODM, technical cooperation, new products development and joint venture to realize win-win situation.



ANECHOIC CHAMBER



The success of DSPPA is based on advanced technology, market-orientated strategy and insistent efforts. DSPPA is dedicated to providing the first-class products and service for worldwide clients.

CERTIFICATES

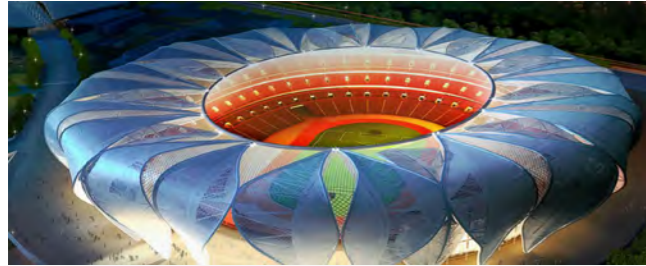
- RoHs Certificate
- FCC Certificate
- AEO Certificate
- UL Certificate
- CCC Certificate
- Chief Editor of Technical Standard for public address system engineering
- CE Certificate
- IP66 Certificates
- CB Certificate
- ISO9001, ISO14000



QUALITY CONTROL



» Sports Event



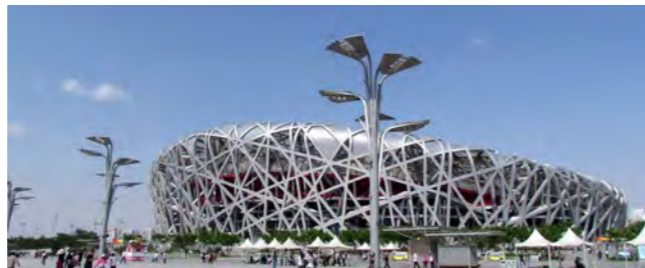
2023 Hangzhou Asian Games



2018 Jakarta Asian Games

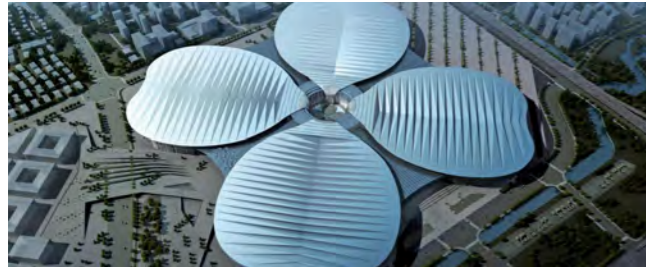


2014 Winter Olympics in Sochi Russia



2008 Beijing Olympic Games

» Summit & Expo



2017 China Exhibition Complex in Shanghai



2016 G20 Hangzhou Summit



2012 Asia-Europe Summit



2010 Shanghai Expo

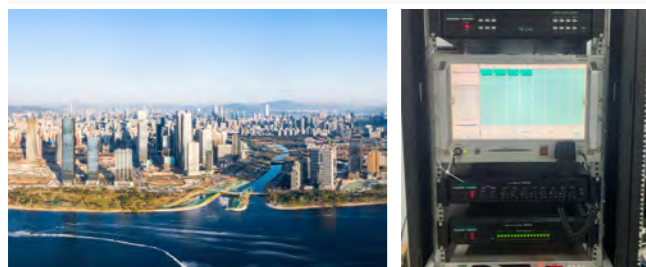
» Governmental Agencies



PA System & Conference System in Cameroon Sea Port



Network PA System for BBPK Ciloto in Indonesia



IP PA System in Shenzhen Qianhai Comprehensive Bonded Zone



Network PA System in China Southern Power Grid

» School



IP PA System for the International School of Budapest Hungary



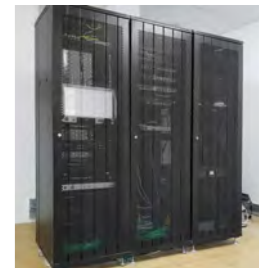
Network PA System for YUSR International School in Saudi Arabia



PA system for the University of Brunei Darussalam



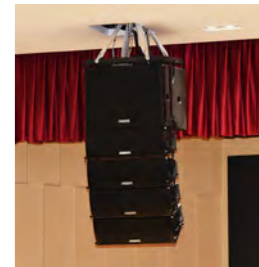
Network IP System for Shattuck-St. Mary's School in Malaysia



PA System for Education Center Cambodia



PA System for Peiwen Foreign Language School of Guangzhou



» Stadium



Outdoor Loudspeakers for Stadion CKS Czeladź Poland



Intelligent PA System for A Football Stadium in Serbia



PA Speaker in 2018 FIFA World Cup Training Stadiums



Audio Matrix System for Liv Fitness in Saudi Arabia



IP Network PA System for Beijing Workers Gymnasium



Network PA System for Al Remal Club in Libya



» Factory



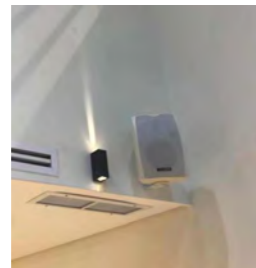
Intelligent PA System for EAM Maliban Textiles (Pvt) Ltd. in Sri Lanka



Network PA System in Euphoria Apparels Ltd.



PA System for Kuwait Accountants and Auditors Association



IP PA System in Olkaria Power Plant Kenya



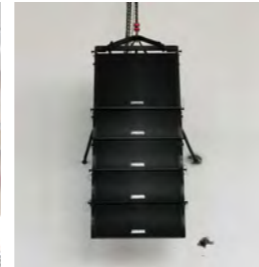
» Airport & Railway



Network System for Shijiazhuang Zhengding International Airport in China



Professional Audio System for Yibin Wuliangye Airport in China



PA System for Yuxi-Mohan Railway in the BRI Construction



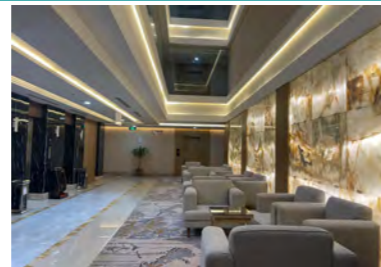
IP System for the Railway Station in Yunnan China



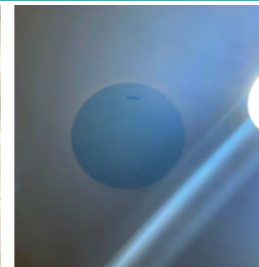
» Hotel



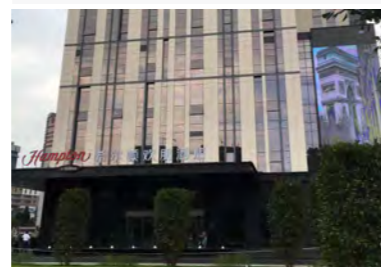
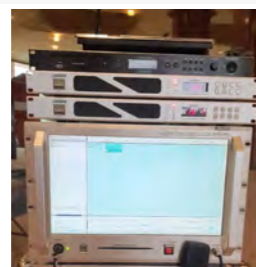
IP Intercom PA System in DoubleTree by Hilton Putrajaya Lakeside Malaysia



Voice Evacuation System for Mirnian Hotel in Saudi Arabia



Network PA System for Hotel President in Cote d'Ivoire



Network PA System in Hampton by Hilton Guiyang Convention Center



» Hospital



Digital Audio Matrix System in Maadi Hospital in Cairo Egypt



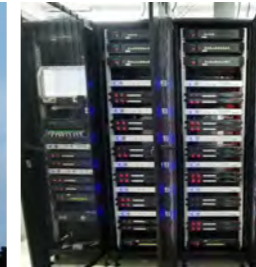
Intelligent PA System in Maternity and Child Hospital in Myanmar



» Bank



IP Based PA System for Thai Military Bank of Thailand



Network PA System for Commercial Bank of Ethiopia



» Tourist Scenic



4G Cloud Audio System for the Dadonghai tourist attraction in Sanya



IP Network System for Qin King's Mausoleum of Tang Dynasty



» Mosque



PA System for Ismail Ata Mosque in Kyrgyzstan



Outdoor Horn Speakers for Tuanku Mizan Zainal Abidin Mosque in Malaysia



» Shopping Mall



Voice Evacuation System for the shopping mall AL WAHDA MALL in Abu Dhabi



POE Network System for Shimanto Shambhar Shopping Mall in Bangladesh





A display of the past, a platform for the future

CONTENTS

01 EN54 Voice Evacuation Systems

- 01 Integrated Voice Evacuation PA System
- 09 Compact Wall-mount Voice Evacuation System

13 IP Network Audio Systems

- 13 MAG6000 Classical IP Network PA System
- 30 MAG6000 POE Network Audio System
- 38 MAG6000 Network Wireless Zone Explanation System
- 41 MAG6000 Railway PA System
- 49 DSP9000 Network PA & Intercom System
- 61 DT2200 Dante Network System
- 63 Dante Network Matrix System

66 Long Range Acoustic Hailing System

- 67 Active Acoustic Hailing Speaker
- 72 Network Acoustic Hailing Speaker

73 Intelligent PA Systems

- 73 8x8 Digital Audio Matrix System
- 77 Intelligent PA System
- 81 Intelligent Music System

- 05 Dante Integrated Voice Evacuation PA System

- 26 MAG6000 Compact Network PA System
- 34 MAG6000 IP Audiovisual System
- 40 MAG6000 Onvif IP Network System
- 45 MAG6000 Peripheral Equipment
- 60 MAG2400 Dante Network PA System
- 62 4G Cloud Network Wireless PA System

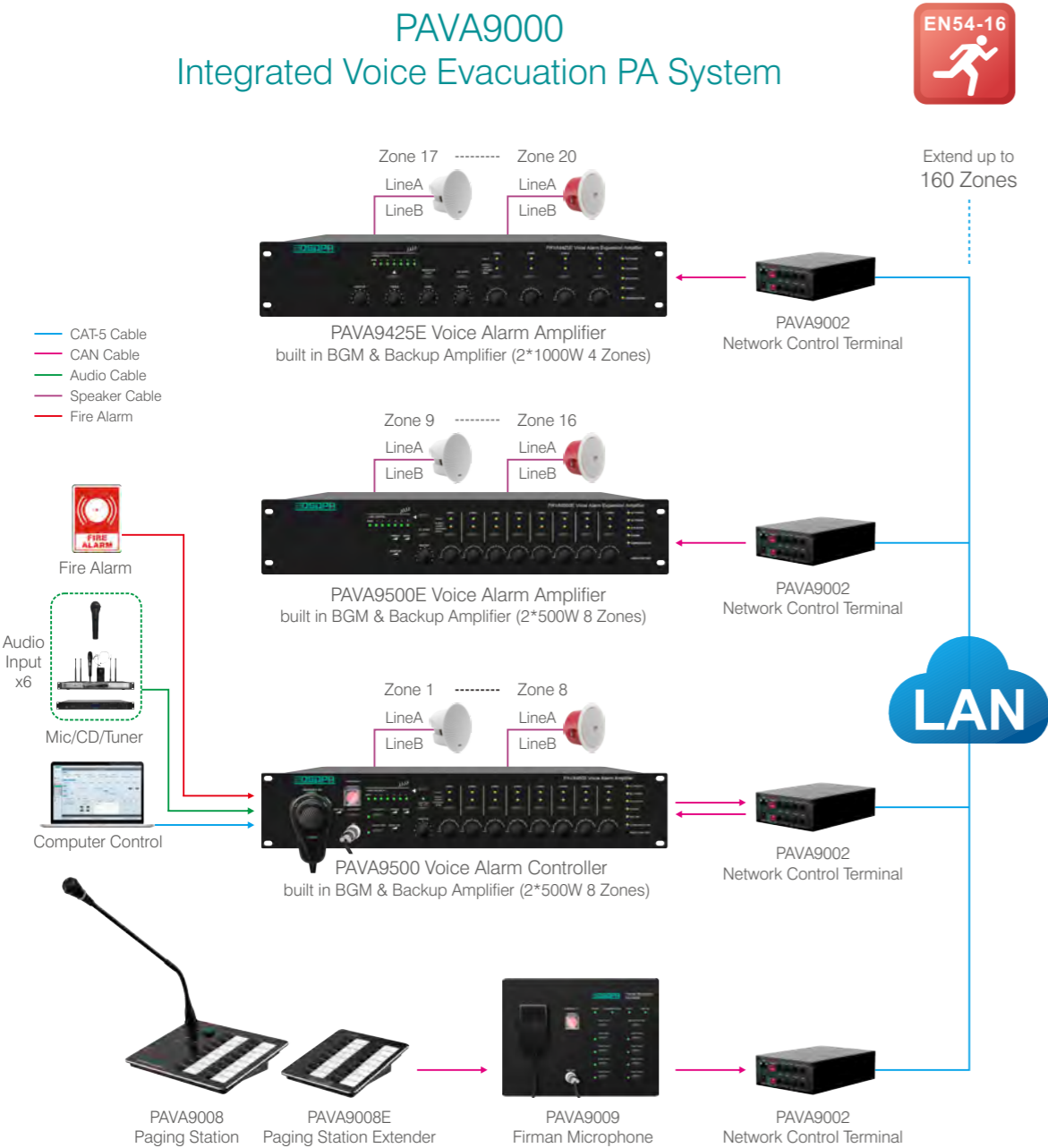
- 71 Passive Acoustic Hailing Speaker

- 75 5 Channels Digital Audio Matrix System
- 79 Automatic PA System

Voice Evacuation System

The EN 54 fire detection and fire alarm systems is a series of European standards that includes product standards and application guidelines for fire detection and fire alarm systems as well as voice alarm systems.

The requirements related to voice evacuation system include EN 54-4 (Power supply equipment), EN 54-16 (Voice alarm control and indicating equipment) and EN 54-24 (Component of voice alarm systems - Loudspeakers).



- 8 to 160/128 zones remote control (by expansion amplifier)
- With one-button alarm and two editable alarm voices
- Support emergency voice and BGM without interference
- Support expansion to network system via network terminal
- Comply with EN54-16 standards
- Support automatic fault diagnosis, data backup
- With built-in backup amplifier
- With 6 external audio input and 1 output interface

PAVA9500

8 Zones 500W Amplifier Host with Main/Backup Switching



- 8 zones speaker output(could be extended up to 160 zones)
- Built in 500W main amplifier and 500W backup amplifier,with amplifier fault detection
- Support 2 balanced microphone inputs, 4 analog AUX inputs and 1 AUX output
- With master volume control and treble and bass control
- Support paging to specific zone without interrupting background music broadcasting
- With on/off buttons for an independent zone and all zones
- With line detection function, including open circuit, short circuit, and normal states
- Dual RJ45 network ports and CAN bus transmission, transmission distance up to 800 meters between host and extender
- Support 100V bridge output, independent zone volume control, and AB line output
- With DIP settings for ID address setting
- With one-button alarm and two editable alarm voices
- Support program source monitoring function
- Support automatic playback and timing functions for timed fixed-point and fixed-area track playback
- Support remote computer detection and control
- Support speaker line detection and system detection
- 8 channels dry contact trigger input/output,8 channels DC24V override output
- Support system fault detection, emergency output and emergency reset input
- Support AC220V and DC24V power supply

PAVA9002

Network Control Terminal



- Wall-mounted, with a black iron chassis
- With dual RJ45 network interfaces for hand-in-hand connection
- With DIP settings for easy binding to other devices and mode selection
- With dual RJ45-CAN bus interfaces, including CAN data bus and 2 balanced outputs or 1 balanced input
- Support remote paging microphone acquisition and transmission mode
- The terminal can be connected to a device separately, or up to 4 devices simultaneously
- The whole system can support up to 8 microphones
- Support expansion amplifier receiving and decoding mode
- A single terminal can be connected to 1-30 expansion amplifiers
- Support host transmission mode. Using multicast mode, it supports LAN only
- Support host receiving mode. Using unicast mode, it supports LAN and WAN

PAVA9500E

8 Zones 500W Expansion Amplifier with Main/Backup Switching



- 8 zones speaker output(could be extended up to 160 zones)
- Built in 500W main amplifier and 500W backup amplifier,with amplifier fault detection
- Support 2 balanced microphone inputs, 4 analog AUX inputs and 1 AUX output
- With master volume control and treble and bass control
- Support paging to specific zone without interrupting background music broadcasting
- With on/off buttons for an independent zone and all zones
- With line detection function, including open circuit, short circuit, and normal states
- Dual RJ45 network ports and CAN bus transmission, transmission distance up to 800 meters between host and extender
- Support 100V bridge output, independent zone volume control, and AB line output
- Support expansion amplifier address selection
- Support program source monitoring function
- Support remote computer detection and control
- Support speaker line detection and system detection
- 8 channels dry contact trigger input/output,8 channels DC24V override output
- Support AC220V and DC24V power supply

PAVA9425E

4 Zones 1000W Expansion Amplifier with Main/Backup Switching



- 4 zones speaker output(could be extended up to 128 zones)
- Built in 1000W main amplifier and 1000W backup amplifier,with amplifier fault detection
- Support 2 balanced microphone inputs, 4 analog AUX inputs and 1 AUX output
- With master volume control and treble and bass control
- Support paging to specific zone without interrupting background music broadcasting
- With on/off buttons for an independent zone and all zones
- With line detection function, including open circuit, short circuit, and normal states
- Dual RJ45 network ports and CAN bus transmission, transmission distance up to 800 meters between host and extender
- Support 100V bridge output, independent zone volume control, and AB line output
- Support expansion amplifier address selection
- Support program source monitoring function
- Support remote computer detection and control
- Support speaker line detection and system detection
- 4 channels dry contact trigger input/output, 4 channels DC24V override output
- Support AC220V and DC24V power supply

PAVA9008

Remote Paging Microphone



- Support 16-zone paging, single or multiple zones paging, group paging and all-zone paging
- With DIP settings
- Can expand to external keyboards
- With 1 AUX IN for paging signal input
- Support CAN bus transmission and power supply, and DIP settings. If the host is connected to a device via a single port, it can support a maximum transmission distance of 600 meters. The host can be cascaded to up to three devices via a single port, with a maximum transmission distance of 300 meters. A single host can be connected to up to eight devices (remote paging microphone or fireman microphone) at once
- Support 16-zone keyboard expansion, and provide more display and control, as well as user-defined buttons

PAVA9008E

Expansion Keyboard



PAVA9009

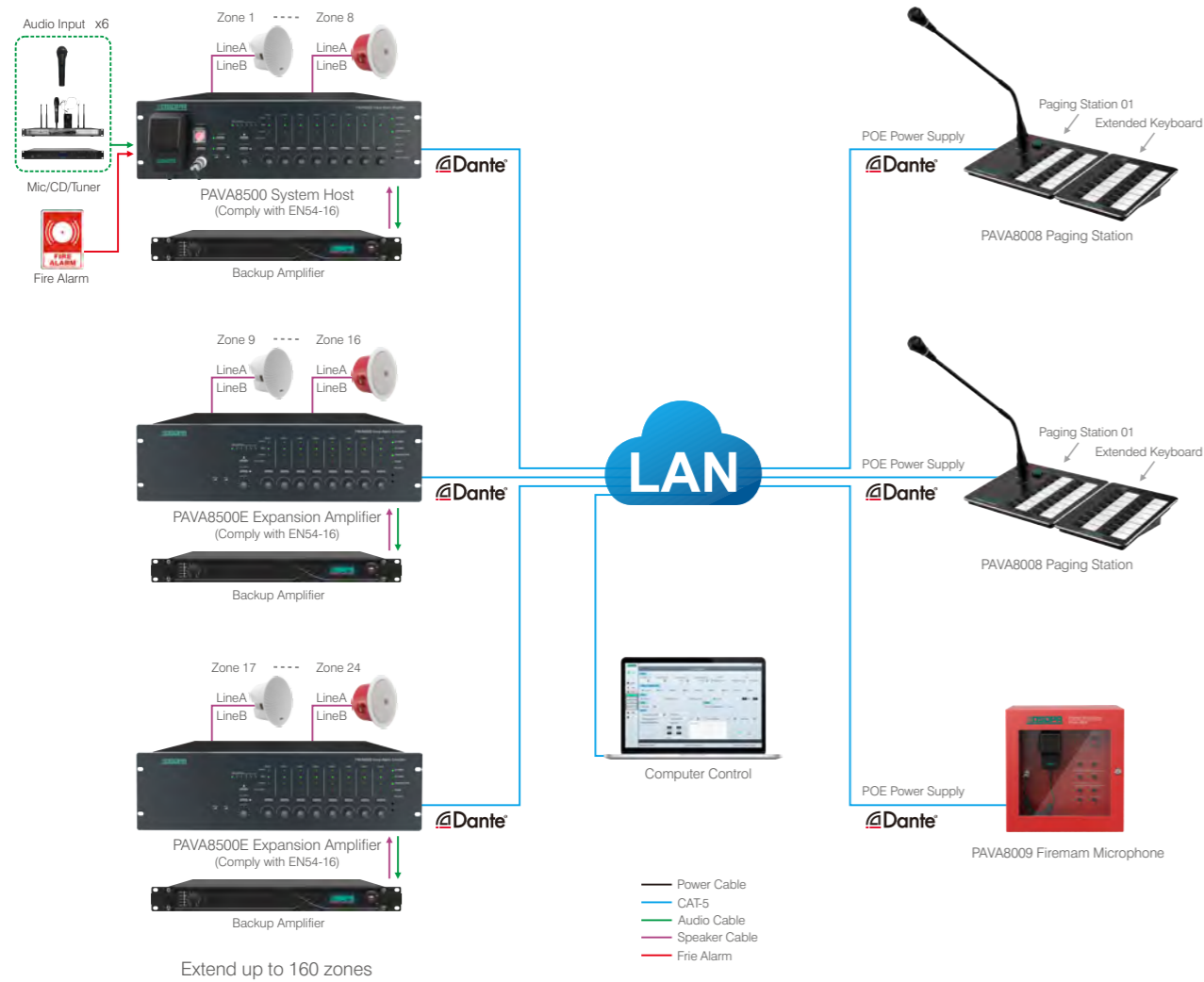
Fireman Microphone



- Designed with a frosted oxidized blackened aluminum panel and large buttons of the same size as the host for better tactile impression and less unintended activation, minimalist in look yet distinctive in style
- Support EVAC control of the PAVA9500, with four programmable shortcut buttons
- Support real-time microphone monitoring
- Support CAN bus transmission and power supply, and DIP settings
- A host can be connected to 8 remote microphones in total
- With dual network port redundancy design, it can support loop connection
- With operation permission control
- Multiple devices can be connected hand-in-hand



PAVA8000 Dante Integrated Voice Evacuation PA System



- 8 to 160 zones control (by extender)
- Compact design with built-in amplifier
- Support remote control and system diagnose via computer

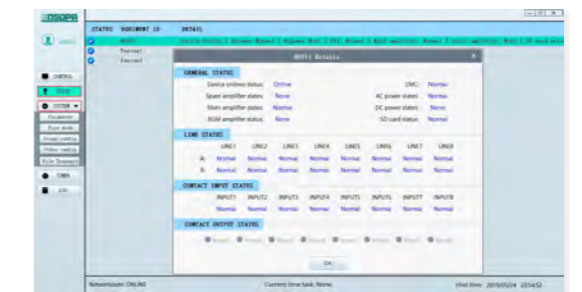
- Comply with EN54-16 standards
- Built-in SD card for voice message
- Auto detection for system failure speaker line / EMC Mic / Paging Mic, etc.

- Venues of all sizes where voice evacuation is needed: shopping mall, exhibition & convention center, star hotel, school, etc.

PAVA8500 8 Zones 500W Voice Evacuation System Amplifier



- 8 zones speaker output (could be extended up to 160 zones)
- Built in 500W digital amplifier
- One button alarm, built in EVAC message & Chime
- 8 Zones speaker output with individual volume control
- Support remote Mic zones or group paging
- DC battery backup monitoring
- Real time monitor with EMC microphone for emergency situation evacuation
- 8 dry contact trigger input/output, DC24V override output
- Support 100V Speaker AB line outputs with impedance supervision



PAVA8000 Voice Evacuation System Software

PAVA8501

8 Zones 500W Voice Alarm Amplifier with Battery Charger



- Support Dante protocol, comply with EN54-16 standard
- Built in 500W digital amplifier
- 8 zones speaker output (could be extended up to 160zones)
- One button alarm, built in EVAC message & Chime
- With 6 Aux input and one balanced output
- Support zones or group paging from remote microphone
- Support background music and EMC broadcasting at the same time
- Real time monitor with EMC microphone for emergency situation evacuation
- 8 dry contact trigger input/output, DC24V override output
- Support 100V Speaker AB line outputs with impedance supervision
- Extend up to 19pcs extender amplifier and 32pcs paging mic
- Support PC software remote control
- Built in charger for emergency battery

PAVA8500E

8 Zones 500W Voice Evacuation System Expansion Amplifier



- Built-in 500W digital amplifier
- 8 zones speaker output with individual management
- Auto detection for system failure, AC/DC, paging Mic, etc.
- Zones extendable by another extender amplifier
- Support remote control via computer
- Comply with EN54-16 requirements

PAVA8008/PAVA8008E

16 Zones Remote Paging Station



- Remote paging mic of PAVA8500
- Each microphone has 16 zones capacity
- Zones extendable by extender Mic PAVA8008E
- System indicators of AC/DC, fault, Mic, etc.
- Comply with EN54-16 requirements



PAVA8009

Fireman Microphone



- Wall mounted structure, conform to the EN standard
- Programmable for the buttons
- Microphone real-time monitoring
- Support paging priority setting
- Support AC220V/POE power supply
- Long distance transmission(Dante technology)

PAVA4600

4 Zones Compact Voice Alarm System Wallmount Amplifier



- Built-in 600W digital amplifiers, automatically switch to standby amplifier when the main amplifier failed
- AB line speaker output of four zones, with independent power switch and volume control
- With master volume, treble and bass adjustment
- Support speaker line detection (light load, overload and short circuit)
- One channel audio input, one paging microphone, support offline detection
- With LED director for each zone switch and zone status
- Support AC and DC24V power supply, automatically switch from AC to DC24V
- With 24V battery charger, auto charging when AC power supply is used
- With emergency button for rapid voice alarm
- Two-channel linkage output, two channels 24V signal output
- Two channels of dry contact input, can connect with fire alarm system
- Can be connected with Fireman Microphone PAVA4400

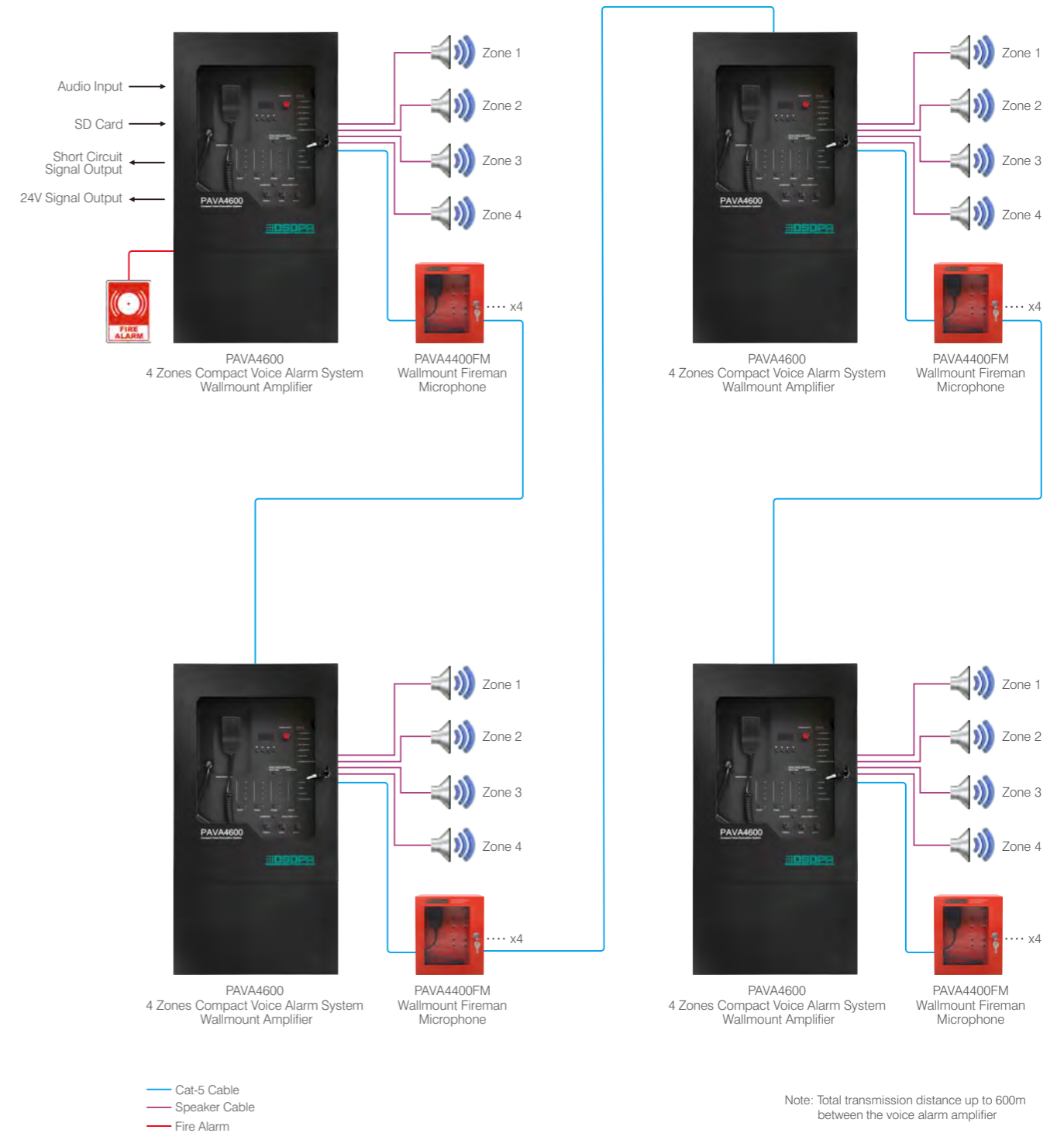
PAVA4400FM

Wallmount Fireman Microphone



- Can remotely control PAVA4600
- With EVAC and ALERT voice
- Support real-time monitoring of microphone
- One network cable to supply power, transmit audio and communicate
- Support 300m long-distance transmission
- Support redundant cable connection
- Supports automatic fault diagnosis, data backup, line redundancy and fault status recording
- With LED light to indicate the connecting status and fault status
- With operation permission control

PAVA4600 Voice Alarm PA System Configuration



PAVA2240

Compact Voice Evacuation System Amplifier



- AB line speaker output of two zones, independent switch with master volume, treble and bass adjustment
- Support speaker line detection (light load, overload, open circuit and short circuit)
- One channel audio input, two-zone paging microphone, support offline detection
- Built-in primary and standby 240W digital amplifier module, auto switch to standby amplifier when the primary one breaks down
- Support AC/DC power supply, and AC/DC automatic recognition and switch
- With 24V battery charger, auto charging when AC power supply is used
- With emergency button which supports playing of recordings in SD card under emergency circumstances. Button-press records will be saved in SD card
- Speaking through a handheld microphone will be automatically recorded in SD card
- Two-channel linkage output
- Two channels of dry contact input
- Can be connected with Fireman Microphone PAVA2200

PAVA2200

Fireman Microphone



- Can remotely control PAVA2240
- With EVAC,ALERT voice
- Support real-time monitoring of microphone
- One cable to supply power, transmit audio and communicate
- Support 500m long-distance transmission
- Support redundant cable connection
- With operation permission control

PAVA120B

Single Zone Compact Voice Evacuation Wallmount Amplifier



- Built-in 120W digital power amplifier
- Digital screen to display time, amplifier status, and Fireman MIC status
- One-key alarm button and two customized alarm message
- With EMC microphone for voice evacuation
- LED light to indicate system connection status and fault status
- Support automatic speaker line detection (light load, over load and short circuit)
- 1 AUX input interface, 1 Fireman MIC input, support offline detection
- Built-in DC 24V battery charger, automatically charging for emergency battery
- System error information is backed up in SD card
- A/B line speaker output for one zone, output power 120W
- Independent volume control, with treble and bass adjustment
- 2 channels relay output interface and 2 channels 24V output interfaces
- 2 channels of dry contact input, can be integrated with the third-party system
- Network cable interface for connecting to PAVA2200FM Fireman MIC
- Power supply: AC220V-230V/50Hz



PAVA2200FM

Single Zone Fireman Microphone



- Wallmount type fireman microphone
- With EVAC and Alert alarm message
- Microphone real-time monitoring
- Support paging priority setting
- Long distance transmission (Dante technology)
- Power supply: AC220V or POE

MAG6000 IP Network PA System

DSPPA IP Network System is based on DSPPA protocol and compatible with TCP/IP protocol.

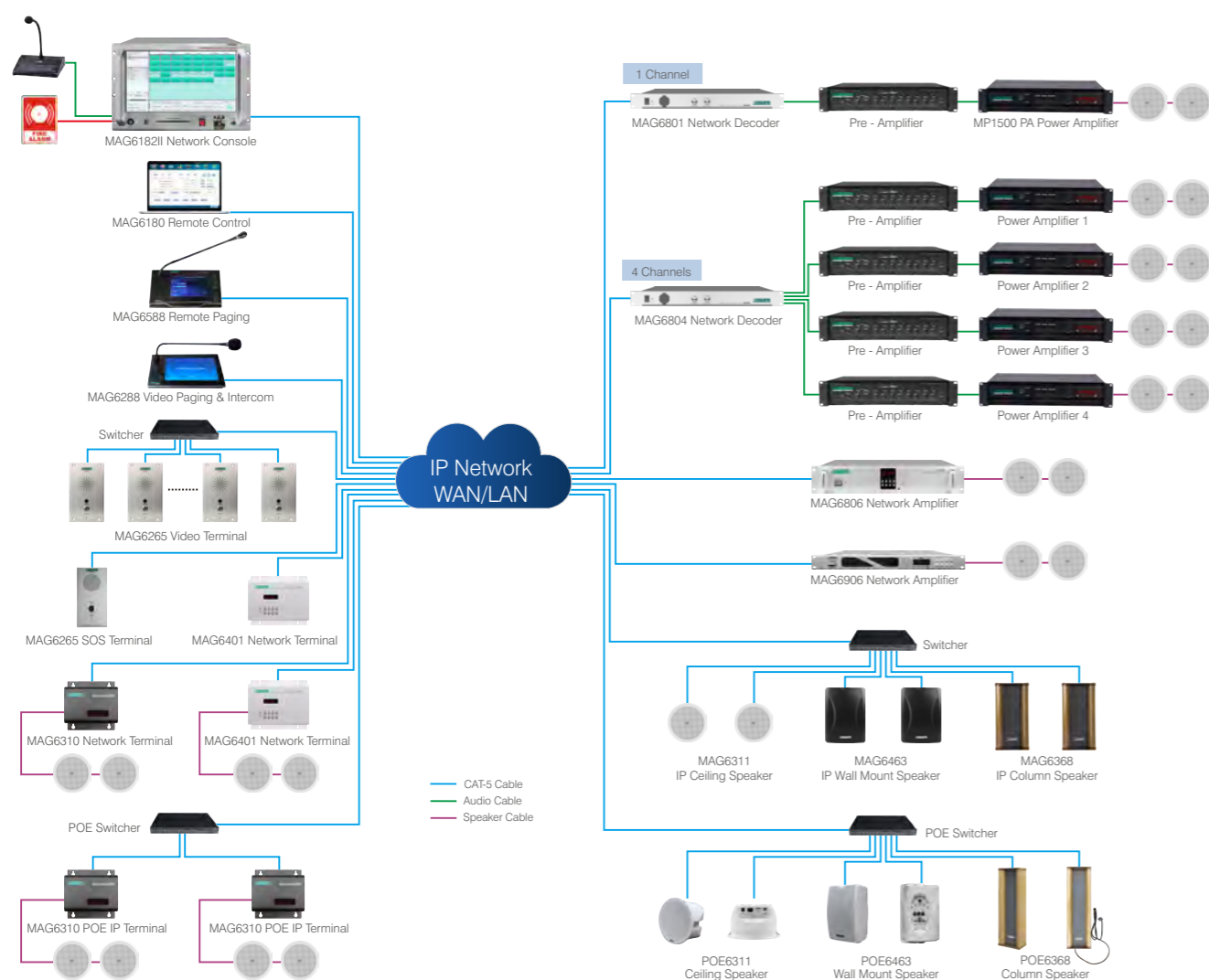
IP Network takes the advantage of the existing LAN/WAN (like internet), which can help speed up the construction, save cable laying, and combine different networks together.

Comparing to traditional PA system, IP network system is more flexible and can transmit farther.

Applications: Airport, Railway stations, Stadiums, Expo centers, Parks, Office buildings, Campuses, Shopping malls, Plants, etc.

- Flexible, no limit of zone management
- Abundant audio source inputs
- Programable timing function
- Remote control and paging function
- Remote computer control and monitoring
- Automatic backup and recovery

Configuration

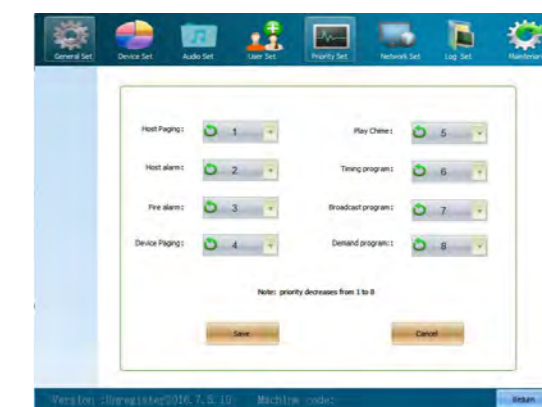


MAG6182II (Windows) / MAG6182L (Linux) IP Network PA Center



MAG6182II / MAG6182L

- IP based network system
- 17" true color touch screen, easy for use
- Industrial circuit board for stable running
- Standard 19" design for rack mounting
- Keys are needed to turn on the console, ensure the operation system
- Modularized design to meet different project requirements
- Support online software updating
- Power supply: AC220V/50Hz/150W



MAG6180
IP Network Software

- Software of MAG6000 network system
- Can serve as the console when installed in computer
- Runs well with Windows systems and Linux systems
- Friendly interface window, easy for use
- Support online software updating

MAG6585

Compact Network Paging Station



- IP network remote control & paging station
- Support 10M/100M self-adaptive TCP/IP protocol
- 4.3" true color LCD touch screen display & control
- Built-in 2W speaker for monitor and talk-back function
- Support one button for paging on/off to all zones
- Support intercom with other paging stations
- With delay function to close the microphone
- Power supply: DC12V

MAG6588

IP Network Paging Station (desktop type)



- IP network remote control & paging station
- Support 10M/100M self-adaptive TCP/IP protocol
- 7" true color LCD touch screen display & control
- Built-in 3W speaker for monitor and talk-back function
- Can play music from the console to one zone/all zones
- Support zone paging and group paging
- Support paging recording and memo function
- Built-in chime as speech & paging notification
- Power supply: AC220V/50Hz & DC14V

MAG6589

IP Network Paging Station (on-wall type)



- IP network remote control & paging station
- Support 10M/100M self-adaptive TCP/IP protocol
- 7" true color LCD touch screen display & control
- Built-in 3W speaker for monitor and talk-back function
- Can play music from the console to one zone/all zones
- Support zone paging and group paging
- Support paging recording and memo function
- Built-in chime as speech & paging notification
- Power supply: AC220V/50Hz

MAG6806/MAG6812/MAG6825/MAG6835/MAG6865

IP Network Amplifier



- IP network digital power amplifier
- RMS power 60W/120W/250W/350W/650W @100V
- Support 10M/100M self-adaptive TCP/IP protocol
- Built-in digital amplifier mould, high efficiency (90%)
- Digital screen indicator for display status and time
- Can play music, paging and alarm from the console
- Built-in USB and SD interface for local audio playing
- One AUX input, one Mic input, one AUX output & EMC output
- Can link with MAG6402 display terminal and intercom panels
- Power supply: AC220V/50Hz

MAG6806/MAG6812/MAG6825/MAG6835/MAG6850/MAG6865/MAG6895

IP Based 1U Network Amplifier



- 1U rack mounted IP network digital power amplifier
- RMS power 60W/120W/250W/350W/500W/650W/1000W @100V
- Support 10M/100M self-adaptive TCP/IP protocol
- Built-in digital amplifier mould, high efficiency (90%)
- Digital screen indicator for display status and time
- Can play music, paging and alarm from the console
- Built-in USB and SD interface for local audio playing
- One AUX input, one Mic input, one AUX output & EMC output
- Can link with MAG6402 display terminal and intercom panels
- Priority: Mic/Network audio/Aux input adjustable
- Support IR remote controller
- Power supply: AC220V/50Hz

MAG6806A/MAG6812A/MAG6825A/MAG6835A/MAG6850A/MAG6865A IP Based 1U Network Amplifier with Main/Standby Switchover



- 1U rack mounted IP network digital power amplifier
- RMS power 60W/120W/250W/350W/500W/650W @100V
- Support 10M/100M self-adaptive TCP/IP protocol
- Built-in digital amplifier mould, high efficiency (90%)
- Digital screen indicator for display status and time
- Can play music, paging and alarm from the console
- Built-in USB and SD interface for local audio playing
- One AUX input, one Mic input, one AUX output & EMC output
- Can link with MAG6402 display terminal and intercom panels
- Priority: Mic/Network audio/Aux input adjustable
- Support IR remote controller
- Power supply: AC220V/50Hz
- Built-in DSP processor, with auto adjustment function for bass and treble
- Connect with PC1021X matrix controller to realize Main/Standby switchover
- With DC24V backup power output

MAG6801/MAG6804 IP Network Audio Terminal



MAG6801



MAG6804

- One channel/Four channel IP network audio terminal
- Support 10M/100M self-adaptive TCP/IP protocol
- Built-in network signal to audio signal decoder
- 1/4 channel AUX outputs of 6.3mm/RCA interface
- Can play music, paging and alarm from the console
- One EMC input and one EMC output
- 1 U slim design, 19" rack mounting design
- Power supply: AC220V/50Hz

MAG6804H IP Network Audio Terminal with Audio Mixing



- Four channels IP network audio terminal
- Support 10M/100M self-adaptive TCP/IP protocol
- Built-in network signal to audio signal decoder
- 4 channels AUX outputs of 6.3mm/RCA interface
- Can play music, paging and alarm from the console
- One EMC input and one EMC output
- 1 U slim design, 19" rack mounting design
- Power supply: AC220V/50Hz
- Support audio mixing output

MAG6811 1 Channel Audio Output Terminal



- With dual network interface design
- Support 10M/100M adaptive network transmission
- Support maximum 48kHz sampling rate 16Bit MP3/WAV/PCM decoding
- With built-in watchdog function
- With fully digital design, high fidelity, and high speech transmission index.
- With override input and override link output
- With DC24V/100MA output and short-circuit output, with separate control for those two output modes
- With controllable local monitoring volume
- With 2 mains output interfaces, with the maximum output current of 16A, which can be remotely controlled manually or regularly by the network host

POE1028 SNR Self-adaptive POE Sensor



- Cat-5 cable connect with POE switch
- Noise detection range 50dB-100dB
- Automatic feedback the real-time SNR to system host
- Host analyse the feedback information and auto adjust the speaker volume
- Setup the sensor to match a certain speaker
- Multiple sensors with independent control on different terminals respectively
- Power supply: POE48V

MAG6401 IP Network Terminal with Built-in Amplifier



- Built-in network decoder and amplifier
- With 4-8Ω low impedance speaker outputs
- With 2x25W(4Ω) digital amplifier, bridge connection 50W(8Ω)
- Multiple audio source inputs: AUX, Mic, USB, SD
- 24V EMC of short circuit output
- 1 AUX output of RCA for power extension
- Can link with MAG6402 network audio display panel
- Support operation across network segments
- Power supply: AC220V/50Hz

MAG6310

2x15W IP Network Terminal with Amplifier



- Built-in network decoder and amplifier
- 4-8Ω low impedance speaker outputs
- Built-in 2x15W(4Ω) digital amplifier
- Multiple audio source inputs: AUX, Mic, USB, SD
- 24V EMC of short circuit output
- 1 AUX output of RCA for power extension
- Support POE power supply via POE splitter
- Support operation across network segments
- Power supply: AC220V/50Hz

MAG6415

Network Trigger Terminal



- Support TCP/IP protocol, can be mount to any place accessible to the network
- With POE interface that complies with the IEEE 802.3af/at standard
- With 1-channel RS-485 communication interface, and 2 channels trigger signal
- Transmitting RS-485 or trigger signal to network system host
- Power supply: POE48V or DC15V

MAG6419

IP Network Terminal with Remote Controller



- Built-in network decoder and amplifier
- 4-8Ω low impedance speaker outputs
- Built-in 2x25W(4Ω) digital amplifier, bridge connection 50W(8Ω)
- Multiple audio source inputs: AUX, Mic, USB, SD
- 24V EMC of short circuit output
- 1 AUX output of RCA for power extension
- Support wireless control, distance up to 1500m
- Support operation across network segments
- MAG6419A Power supply: AC220V
- MAG6419B Power supply: DC16V to DC30V

MAG6701/MAG6701D

IP Network Terminal with Built-in Amplifier



- Dual Network interface, support cross-Net working mode
- With MP3 player, USB, and SD card to play local music
- Support independent timing function without host control
- Built-in 1x60W digital amplifier, 100V speaker output
- Support background music, emergency paging, EMC signal
- 1 auxiliary audio input, 1 auxiliary audio output, 2 MIC input, 1 EMC output, and 1 short circuit output
- LED screen to display signal status, working status and information change
- Support infrared remote control
- MAG6701 Power supply: AC220V/50Hz
- MAG6701D Power supply: AC110V/60Hz & DC24V

MAG6404

IP Network Color Screen Display & Control Panel



- 7" true color touch screen with 800x480 resolution
- Max power: 10W@4Ω (2 channels)
- Built-in 3W monitoring speaker
- Support 10M/100M self-adaptive TCP/IP protocol
- With 1 Aux input, 1 Aux output, 1 12V output
- Support remote paging to one zone or all zones
- Support telephone intercom with other device
- Support insert alarm signal from the host
- Power supply: DC12V-14V

MAG6401G

Signal Switch Interface



- Signal input: 100V or 4-16Ω
- Signal output: 4-16Ω
- Change all the signal input to constant impedance output
- Product dimension: 143x120x60mm
- Power supply: DC24V

MAG6311

IP Network Ceiling Speaker



- Built-in network decoder and amplifier
- Built-in 2x15W(4Ω) digital amplifier
- With MP3 decoding play function
- Can play music, paging and alarm from the console
- Multiple audio source inputs: AUX, Mic, USB, SD
- 24V EMC of short circuit output
- 1 AUX output of RCA for power extension
- Power supply: AC220V/50Hz

MAG6463/MAG6064 IP Network Wall Mount Speaker



- Built-in network decoder and amplifier
- Built-in 2x25W(4Ω) high efficiency digital amplifier
- One AUX input, one AUX output, 100V input
- 1 AUX output of RCA for power extension
- LED screen indicator for display status
- Can link with MAG6402 network audio display panel
- Support operation across network segments
- MAG6064 Rated power: 30W@4Ω
- Power supply: AC220V/50Hz

MAG6363/MAG6362 IP Network Monitoring Speaker



- Built-in network decoder and amplifier
- Built-in 2x15W(4Ω) high efficiency digital amplifier
- Can play music, paging and alarm from the console
- One AUX input, one AUX output, 100V input
- 1 AUX output of RCA for power extension
- LED screen indicator for display status
- Support control of IR remote controller
- Support operation across network segments
- Power supply: AC180V-240V/50Hz-60Hz

MAG6463S IP Network Wall Mount Speaker



- Built-in network decoder and amplifier
- Built-in 2x25W(4Ω) high efficiency digital amplifier
- Can play music, paging and alarm from the console
- 2 Stereo AUX input, one stereo AUX output, 100V input
- 1 AUX output of RCA for power extension
- With MP3 decoding playback
- LED screen indicator for display status
- With dual network interface design, support hand-in-hand connection
- Support operation across network segments

MAG6360 20W Network Indoor Speaker



- Network indoor wallmount speaker
- Rated power 20W @ 4Ω
- Sensitivity 90±2dB, Max SPL 102±2dB
- Effective frequency response: 110Hz-15kHz
- Support operation across network segments

MAG6464B/W WIFI Network Wall-mount Speaker



- Connect with 5G WiFi, working under 5G
- Dual Network interface
- Support 10M/100M self-adaptive TCP/IP protocol
- Support max sampling rate 48kHz 16 bit digital audio decode
- Built-in 2x25W digital amplifier @ 4Ω
- Support MP3 decode function, transform digital audio to analog signal
- Support bluetooth connection
- With one Aux output interface for power extension
- Power supply: AC220V/50Hz

MAG6364 2x20W Network Indoor Speaker



- Built-in network decoder and amplifier
- Built-in 2x20W(4Ω) high efficiency digital amplifier
- Input: one AUX input ,one AUX output port, one microphone input
- Output: one EMC output, one short-circuit output
- LED screen indicator for display status
- With MP3 decoding playback function
- Power supply: AC220V/50Hz

MAG6350 Outdoor Network Horn Speaker



- With SIP intercom, and network broadcast function
- 10/100M self-adaptive, support DHCP/static IP
- Support the existing DSP9000 and MAG6000 network public address system
- Support WEB background management
- With built-in digital amplifier, low distortion, low noise & wide dynamic range
- With self-protection functions
- All-weather design, suitable for long-term outdoor use
- Power supply: DC24V 2.5A

DSP455N Network Outdoor Waterproof Column Speaker



- 10/100M adaptive Ethernet, support DHCP / static IP
- All-weather design, waterproof unit
- Built-in 60W high-fidelity speaker output
- Support SIP 2.0 (RFC3261) and relevant RFC
- Adopts aluminum alloy case with UV-resistant painting treatment on the surface
- Using high sensitivity, high dynamic range speaker unit
- Equipped with multi-functional mounting bracket, easy to install
- Power supply: AC110-240V/50Hz

MAG6369 Network Outdoor Waterproof Column Speaker



- Adopt all-weather design and waterproof unit
- Sensitivity: 93±2dB
- MAX SPL: 109±2dB
- Freq. Response: 140Hz-14kHz
- Can be mounted to any place with access to network
- Support 16bit digital audio stream decoding at a maximum sampling rate of 48kHz
- With a built-in 40W digital amplifier, with low power consumption
- Power supply: AC220V/50Hz

MAG6368 Waterproof IP Network Column Speaker



- Built-in network decoder and amplifier
- Column speaker with built-in 2x15W digital amplifier
- Can play music, paging and alarm from the console
- Local output volume and local status are controllable
- Waterproof design, suitable for indoor and outdoor use
- Could be installed at any place where the network can arrive
- Dimension: 125x150x485mm
- Power supply: AC220V/50Hz

MAG6378/MAG6388 60W/120W Outdoor IP Column Speaker



- All-weather design IP column loudspeaker
- Rated power: 60W/120W
- Freq. Response: 80Hz-16kHz (±3dB)
- Sensitivity: 89±2dB/90±2dB
- MAX SPL: 105±2dB/108±2dB
- SNR: ≥70dB
- THD: ≤0.5%
- Dimension: 230x250x430mm/230x250x665mm
- Power supply: AC220V/50Hz

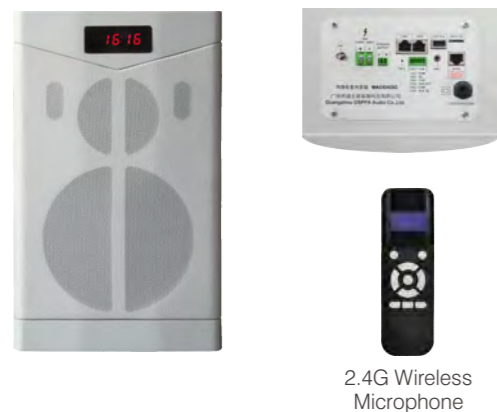
MAG6389/MAG6389L 2x40W Outdoor IP Column Speaker



- All-weather design IP column loudspeaker
- Rated power: 2x40W
- Freq. Response: 120Hz-19kHz (±3dB)
- Sensitivity: 100±2dB
- MAX SPL: 108±2dB
- SNR: ≥70dB
- THD: ≤1%
- Dimension: 657x150x120mm
- Netweight: 6.2kg
- Support off-line timing schedule via TF card
- Power supply of master speaker MAG6389: AC220V/50Hz

MAG6363G

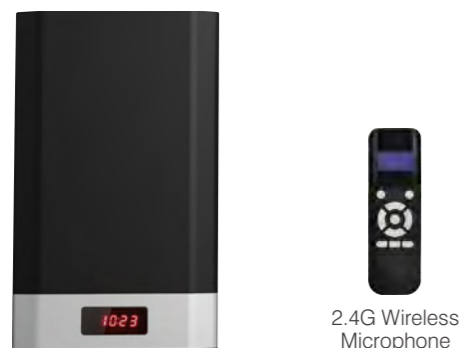
Bluetooth Network Teaching Speaker with 2.4G Wireless Microphone



- Dual Network interface, support cross-net working mode
- Support 10M/100M self-adaptive TCP/IP protocol
- Support max sampling rate 48kHz 16 bit digital audio decode
- Built-in 2x15W digital amplifier @100V
- Support bluetooth connection
- With one Aux input, one Aux output, one Mic input, one EMC output, one short circuit output
- Working status and information change could be displayed on the screen
- Support IR remote control
- Power supply: AC220V/50Hz

MAG6364G/MAG6364VG

Bluetooth Network Teaching Speaker with 2.4G Wireless Microphone



- Support working cross-net segments
- With MP3 decoding playback function
- Support maximum 48kHz sampling rate and 16bit digital audio stream decoding
- Built-in 2x20W digital amplifier
- With one auxiliary audio input port, one auxiliary audio output port, one microphone input and one EMC emergency output, one short-circuit output
- Controllable local output volume and local playing state
- Digital display of working state and information change
- It can be controlled by the infrared remote controller
- Support bluetooth function
- Support 100V signal input (MAG6364VG)

FP808

29" Network Directional Sound Dome Speaker



- Rated power: 1.5W
- Built-in infrared sensor for listeners
- Built-in high efficient stereo amplifier
- Support USB/SD as audio or video source
- Target stereo audio in a narrow footprint
- Be able to accommodate 1 to 3 listeners at the same time
- Support HDMI connect with screen
- Power supply: DC9V
- Dimension: 320x730x730mm

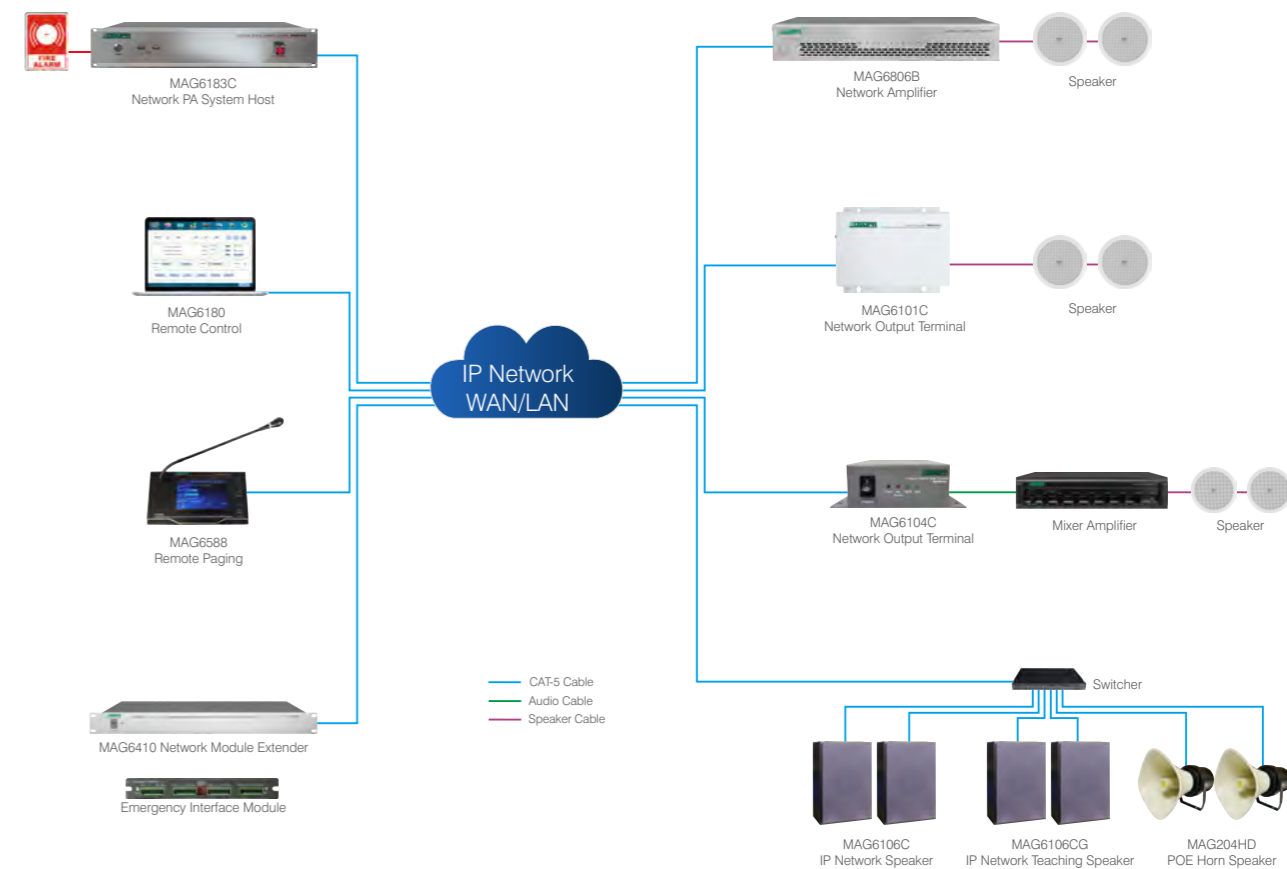
MAG6000 Compact Network PA System

MAG6000 compact network PA system is a highly integrated and intelligent public address system which based on computer network technology.

With LAN as the main transmission media, the transmission distance up to ten kilometers. Using the existing LAN architecture, it can realize the integration of multiple networks, to realize fast construction and long distance communication.

The system host can be compatible with terminals with different functions, including playback terminal, on-demand terminal, paging terminal, one-click emergency terminal etc. The host integrates the audio source player, partition, preamplifier, timer and other functions, but also has a powerful audio matrix function.

The network PA system is applicable to airports, wharfs, university, schools, Expo Park, sports stadiums, industrial parks, parks, railway station and other scene.



MAG6183C

2U Compact Network PA System Host



- With 2 servers and 1 databases, 1 master host, 1 backup unit
- With one-key alarm trigger for all zones and manual alarm
- With TTS Chinese and English text broadcast function
- Can add and display the new zone automatically
- With auto on/off function, easy to use
- With recording function and timing control function
- Can use the network paging terminal to expand the audio input channel
- Support video terminals management to realize video intercom, video monitoring, multi-screen display function
- Support H264 video format
- Support the access of intercom system
- Power supply: AC220V/50Hz/10A

MAG6101C

Wallmount Network Audio Output Terminal



- Supports up to 48kHz sampling rate 16bit digital audio stream decoding
- With one AUX audio input interface and one AUX audio output interface
- With 4 LED status indicators, can display the working state
- Support remote setting through a web of native network
- Built-in 2 x20W, 4 ohm impedance
- Power supply: AC220V/50Hz

MAG6104C

1 Channel Network Output Terminal



- Supports up to 48kHz sampling rate 16bit digital audio stream decoding
- With one AUX audio input interface and one AUX audio output interface
- With 4 LED status indicators, can display the working state
- Support remote setting through a web of native network
- Rated power: 2W
- Power supply: AC220V/50Hz

MAG6106C

2x20W IP Network Speaker



- Networked terminal processor combined with high -fidelity speaker integrated interior speakers
- Built -in industrial -level special network audio decoding chips
- The source of network programs has seven levels priority management
- Can be hung up anywhere where the network arrives
- Support maximum 48kHz sampling rate 16bit digital audio code flow decoding
- Built -in 2x20W digital amplifier, can connected with slave speaker
- Support remote setting through a web of native network
- Power supply: AC220V/50Hz

MAG6106CG

2x20W IP Network Teaching Speaker



- Networked terminal processor combined with high -fidelity speaker integrated interior speakers
- Built -in industrial -level special network audio decoding chips
- The source of network programs has seven levels priority management
- Support maximum 48kHz sampling rate 16bit digital audio code flow decoding
- Built -in 2x20W digital amplifier, can connected with slave speaker
- Support remote setting through a web of native network
- Could connect with 2.4G wireless microphone
- With hand-set teaching microphone
- Support bluetooth function
- Power supply: AC220V/50Hz

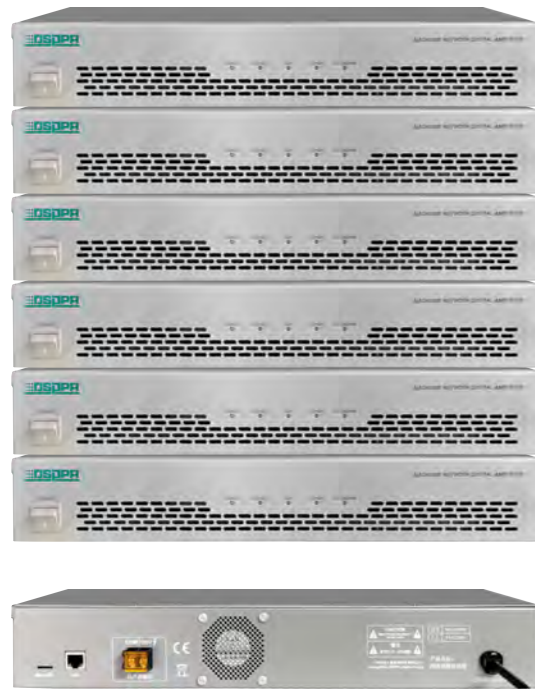
MAG6106L

20W Slave Speaker



- Slave loudspeaker
- Rated power: 20W @ 4Ω
- Sensitivity: 90±2dB
- Max SPL: 103±2dB
- Freq. Response: 120Hz-16kHz

MAG6806B/MAG6812B/MAG6825B/MAG6835B/MAG6850B/MAG6865B
IP Based 1.5U Network Amplifier with Main/Standby Switchover



- 1.5U rack mounted IP network digital power amplifier
- RMS power 60W/120W/250W/350W/500W/650W @ 100V
- Support 10M/100M self-adaptive TCP/IP protocol
- Built-in digital amplifier mould, high efficiency (90%)
- Digital screen indicator for display status and time
- Can play music, paging and alarm from the console
- Built-in SD interface for local audio playing
- Power supply: AC220V/50Hz

MAG204HD
POE Anti Explosion Horn Speaker

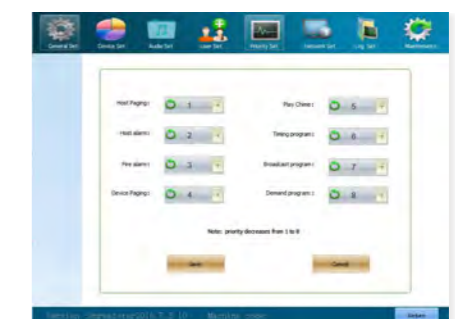
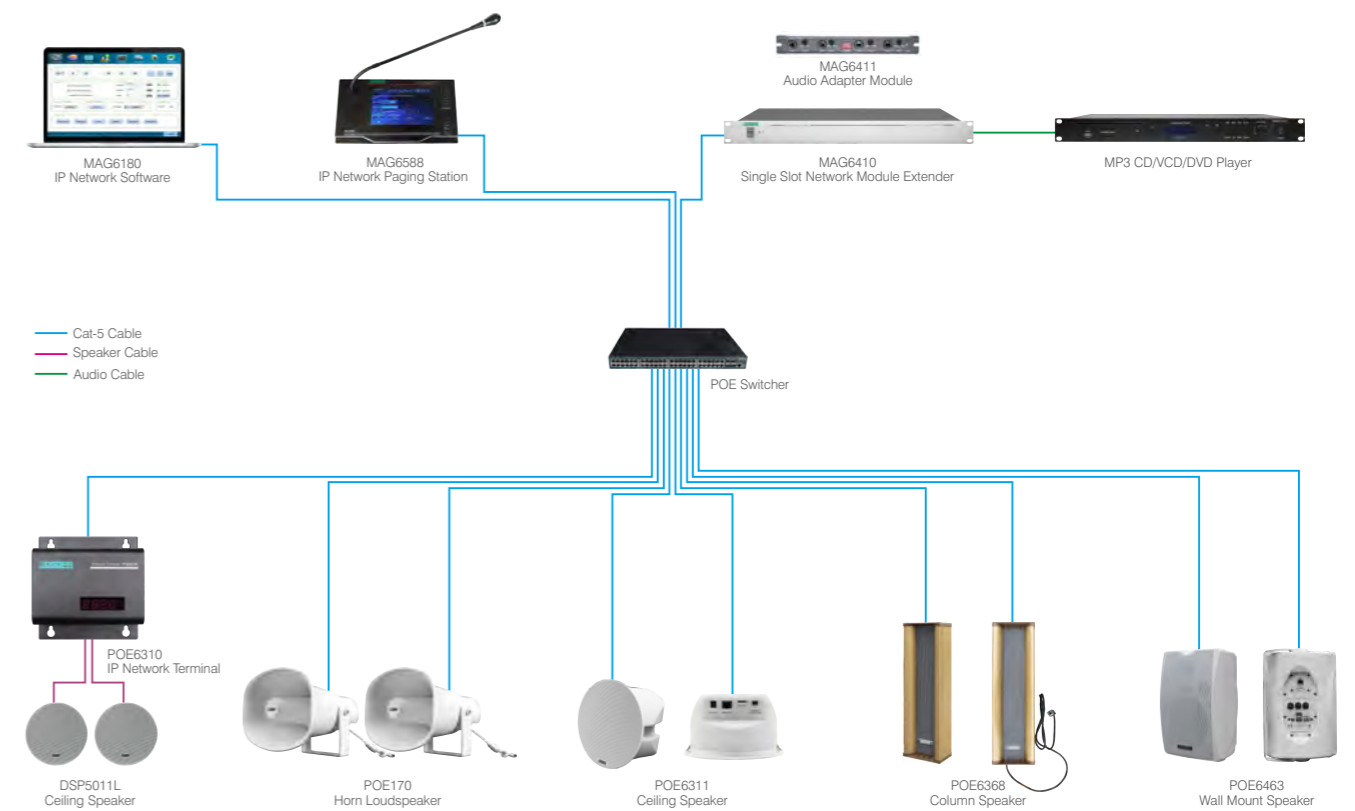


- RMS power 20W
- Max SPL: 108±2dB
- Support maximum 48kHz sampling rate 16bit digital audio code flow decoding
- Can execute background music, timing schedule, emergency paging, alarm signals from the system host
- Support remote modifications to the network parameters of this machine through the webpage
- Built-in 20W digital power amplifier
- Power supply: POE 48V

MAG6000
POE Network Audio System

POE network power supply system uses the existing Ethernet CAT5 wiring to transmit data signals to some IP based terminals (such as IP network public address system terminals, speakers, etc.) and provides DC power supply for such devices, greatly reducing the wiring cost and power loss.

It contains POE IP network digital ceiling speaker, POE IP network digital wall-mounted speaker, POE IP network digital waterproof column speaker, etc. The POE IP network digital speaker, as a simple one-way IP terminal, is mainly used in hotels, shopping malls, supermarkets, leisure clubs, villas, scenic spots, stations, docks, airports, parks and other places.



MAG6180 IP Network Software

POE6310

IP Network Terminal with Built-in Amplifier



- Can be mounted anywhere with network
- Built in with an MP3 decoding player
- Support max sampling rate 48kHz 16 bit digital audio decode
- Built-in 15W or 2x7.5W high-fidelity digital amplifier
- With 1 AUX input & output, 1 mic inputs and 1 EMC output, 1 short circuit output
- Operating status and information changing digital display
- Can be remote controlled by infrared remote
- Power supply: DC15V or POE48V

POE6401

IP Network Terminal with Built-in Amplifier (Customized)



- Built-in network decoder and amplifier
- With 4-8Ω low impedance speaker outputs
- With 2x10W(4Ω) digital amplifier, bridge connection 20W(8Ω)
- Multiple audio source inputs: AUX, Mic, USB, SD
- 24V EMC of short circuit output
- 1 AUX output of RCA for power extension
- Can link with MAG6402 network audio display panel
- Support operation across network segments
- Power supply: POE48V

POE6463

POE Wall Mount Speaker



- POE power via Cat-5 cable, easy for installation
- Built-in network decoder and amplifier
- Built-in 2x10W(8Ω) high efficiency digital amplifier
- One AUX input, one AUX output, 100V input
- 1 AUX output of RCA for power extension
- LED screen indicator for display status
- Can control via MAG6402 network on-demand terminal
- Support operation across network segments
- Power supply: POE48V

POE6311

IP Network Ceiling Speaker



- Support max 48kHz sampling rate 16bit digital audio stream decoding
- Built-in 2x9W digital amplifier, low power settings
- With 1-channel auxiliary audio input interface, 1-channel auxiliary audio output interface
- 1-channel microphone input and 1-channel EMC emergency output interface, 1-channel short circuit output
- Power supply: DC15V or POE48V

POE170

15W Outdoor POE Horn Loudspeaker



- Rated power: 15W/8Ω
- Freq. Response: 350Hz-10kHz (±3dB)
- Sensitivity: 105±2dB
- MAX SPL: 117±2dB
- SNR: ≥ 70dB, THD ≤ 1%
- 10/100M self-adaptive, support LAN and WAN
- Power supply: DC24V/2A or POE48V

POE6368

Waterproof IP Network Column Speaker



- Waterproof unit, applicable to both indoor and outdoor occasions, high sensitivity (89±2dB)
- Support maximum 48kHz sampling rate for 16bit digital audio stream decoding
- Built-in 2x9W digital amplifier, low power consumption
- Can control the local output volume and local play status
- Complete interfaces which complies with the IEEE 802.3af/at standard for Ethernet power supply (POE) systems
- Power supply: POE48V

POE6364V
Network Indoor Speaker



- With integrated design of networked terminal processor and high fidelity speaker
- Support working cross-net segments
- With MP3 decoding playback function
- Support maximum 48kHz sampling rate and 16bit digital audio stream decoding
- Built-in 2x20W digital amplifier
- With one AUX audio input, one 100V constant voltage input, one AUX audio output, one microphone input
- With one EMC emergency output, one short-circuit output
- Digital display of working state and information change
- It can be controlled by the infrared remote controller
- Power supply: AC220V/50Hz

POE255II
POE Waterproof Column Speaker



- Rated power: 16W/8Ω
- Freq. Response: 50Hz-18kHz (±3dB)
- SNR: ≥70dB, THD: ≤1%
- Driver unit 3"x2"+2"x1"
- Support TCP/IP protocol
- All-weather waterproof column speaker
- Power supply: POE48V

POE6363
Indoor IP Wallmount Speaker

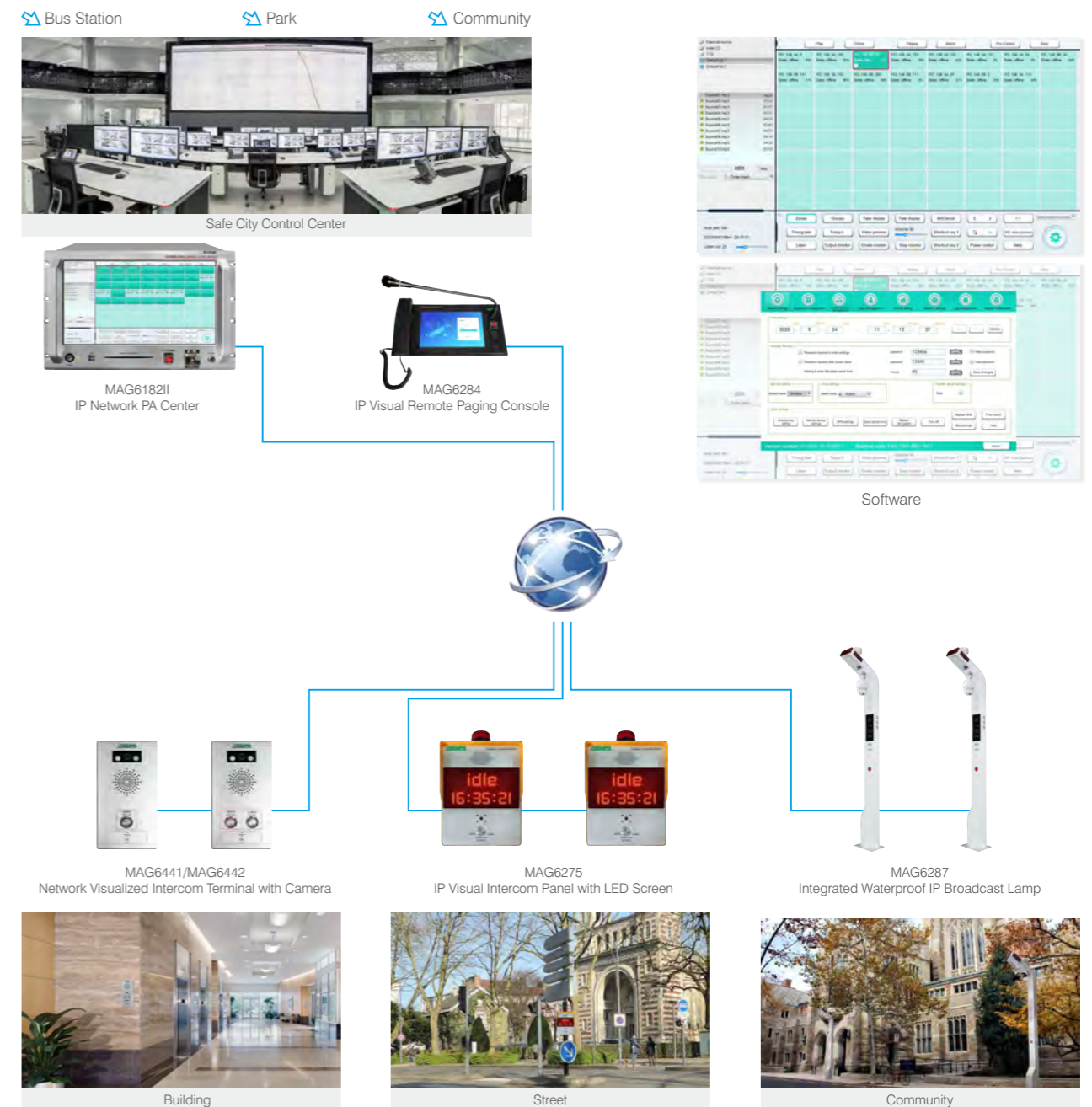


- Built-in 2x10W/8Ω digital power amplifier
- Support USB and Micro SD as audio source
- Support max sampling rate 48kHz 16 bit digital audio decode
- One Aux input, one Aux output, one mic input, one EMC output and one short circuit output
- Can play background music, emergency paging, alarm signal from the system host
- Support infrared remote control
- Power supply: POE48V

MAG6000 IP Audiovisual System

MAG6000 IP Audiovisual System is an IP based system which integrates public address system and intercom system. This system can realize broadcasting and security management through broadcast and audiovisual communication among the administrator, visitors, and help-seekers.

Based on the VOIP protocol, the system not only can support zone paging, broadcasting, visualized intercom, and SOS alarm, but also can connect the IP camera to monitor the situation of each zone. It can be widely used in buildings, command centers, prisons, banks, plants, transportation centers, schools, parks and other places.



MAG6284

IP Visual Remote Paging Console



- 10 inch LCD touch screen, easy to operation
- Max 1000 zones control and management
- Built-in one key alarm button, rapid broadcast for all zone
- Built-in DSP sound technology
- Built-in USB and Micro-USB as audio source
- One Aux input, one Aux output, one net audio output
- Support 10M/100M self-adaptive TCP/IP protocol
- Support HDMI for external display screen
- Power supply: DC15V or POE48V

MAG6283

2U Video streaming server



- Windows operation system, working at 7x24 hours
- Dual Network interface, working across the network segment
- Integrated with transformation, storage, composite, playback of audio and video signal
- With 2 USB port in the front panel for data transformation
- Support 4 hard disk storage, support RAID 0,1,5,10 etc
- Rear panel: one DB9 port, one IPMI network port, two USB2.0 port, two USB3.0 port, two RJ-45 port, one DB15 VGA port
- Power supply: AC220V/50Hz

MAG6421/MAG6422

Emergency Intercom Terminal



MAG6421

MAG6422

- Built-in 3W speaker and microphone
- Built-in 2*10W digital amplifier
- Support POE and DC power supply
- Support SIP/VOIP protocol, realize two-way intercom
- With 1 alarm input and 1 alarm output
- Standard RJ45 interface, across network segments and routes
- Comply with IP65 protection level
- Can play background music, scheduled broadcasts, emergency paging, alarm signals and others from the system host

MAG6441/MAG6442

Network Visualized Intercom Terminal with Camera



MAG6441

MAG6442

- Visualized intercom terminal with camera
- Built-in 3W speaker and microphone
- Built-in 2x10W digital amplifier
- Support POE and DC power supply
- Support SIP/VOIP protocol, realize two-way intercom
- With 1 alarm input and 1 alarm output
- Standard RJ45 interface, across network segments and routes
- Comply with IP65 protection level
- Can play background music, scheduled broadcasts, emergency paging, alarm signals and others from the system host

MAG6275

IP Visual Intercom Panel with LED Screen

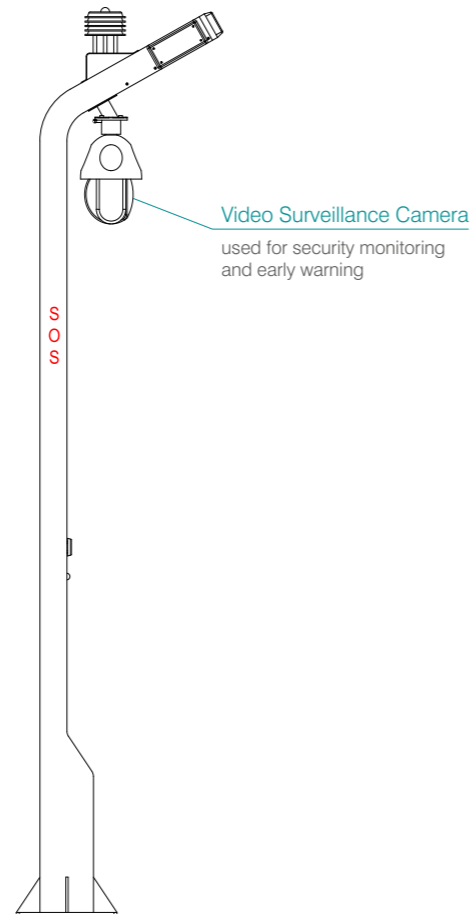
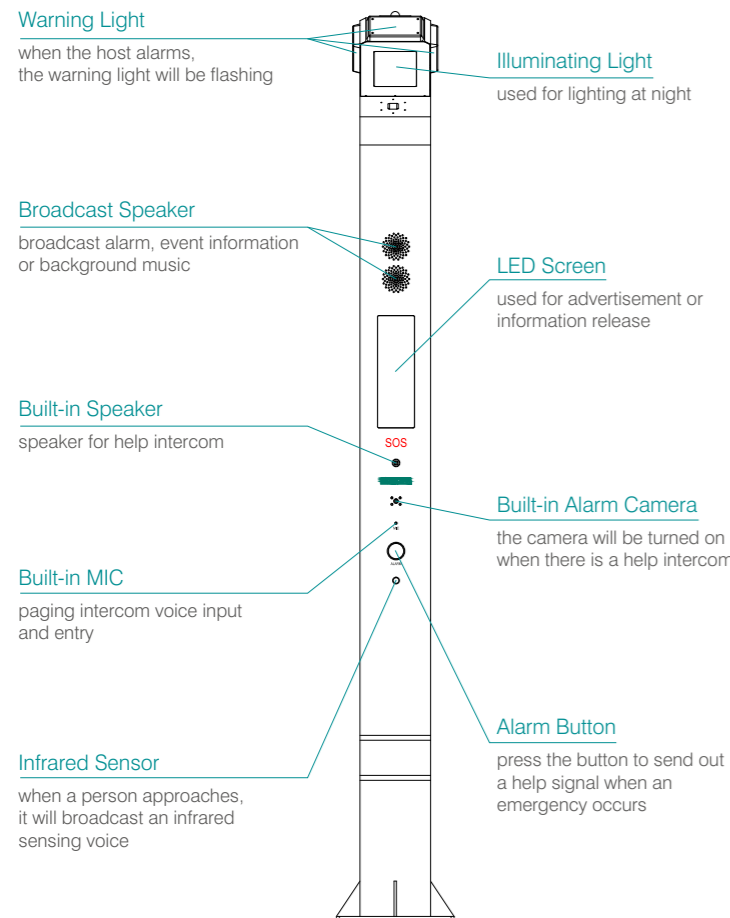


- Built-in 2x15W@4Ω digital amplifier
- Built-in 3W/8Ω monitor speaker and array microphone
- Support H264 encode and decode format
- Support SIP protocol for video intercom and remote paging
- Built-in echo cancellation and feedback suppression
- Built-in 2 million infrared camera, can working at night
- With AI alarm function, can automatic identify the emergency and trigger the alarm signal
- Power supply: AC220V/50Hz

MAG6287 Integrated Waterproof IP Broadcast Lamp

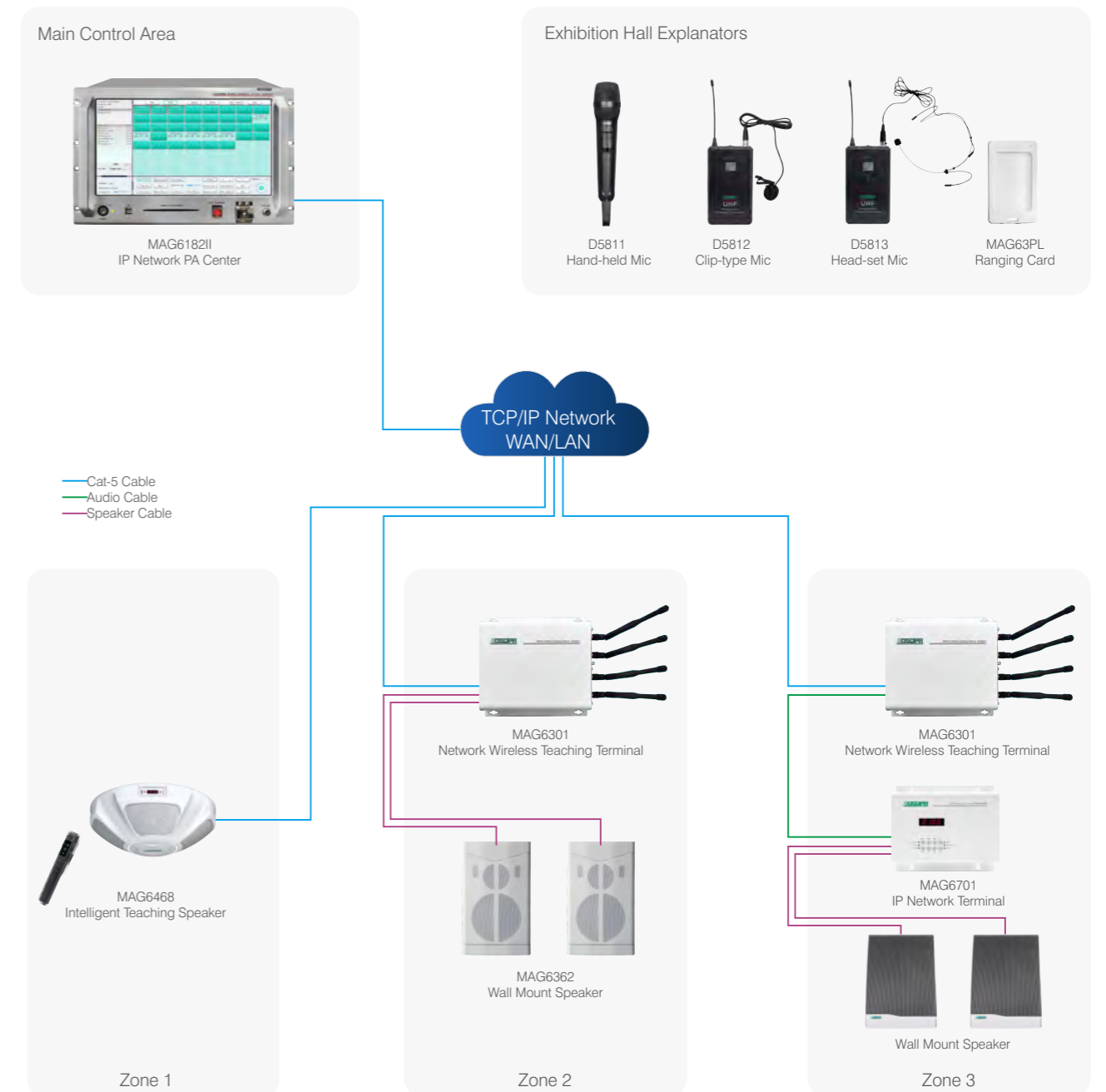


- Built-in 2x10W@4Ω digital amplifier
- Built-in 3W/4Ω monitor speaker and array microphone
- Support Linux/Windows operating platform
- Support one key emergency alarm function
- Support H264, H265 and MPEG4 decoding format
- Support face recognition and behaviour analysis, AI automatic alarm for emergency situation
- With recording and storage function, auto synchronous with server
- Built-in echo cancellation and feedback suppression function
- 15.6 inch LCD screen, support TCP/UDP protocol
- With intelligent lighting function, manual control or auto adjustment
- Built-in environmental monitoring module, can display PM2.5 PM10
- Power supply: DC40V-54V



MAG6000 Network Wireless Zone Explanation System

The Wireless Zone Explanation System revolutionizes communication and collaboration in diverse settings by providing flexible and seamless connectivity within designated zones. Utilizing wireless technology, this system enables individuals to share information, interact, and engage dynamically across different zones without the limitations of physical connections. Whether in educational institutions, corporate offices, or public venues, such systems facilitate efficient communication and knowledge sharing. With features like multi-device connectivity, real-time collaboration tools, and customizable zoning options, Wireless Zone Explanation Systems empower users to enhance productivity, foster innovation, and create interactive environments tailored to their specific needs and requirements.



MAG6301 Network Wireless Teaching Terminal



MAG63PL
Ranging Card

- Built-in 2x40W digital amplifier, connect with 2pcs 20W/4Ω speaker
- Comply with DHCP, TCP, UDP, ICMP, IGMP, ARP protocol
- With 2 or 4 channels wireless microphone receiver, communication distance 100m
- Support up to 48kHz sampling rate 16-bit digital audio stream decoding
- With 1 AUX input and 1 AUX output
- With Web page to set ip address
- Support max 200 lecturer
- With plug-in design, one zone can support 2 or 4 explanation modules
- Support linkage control for automatic explanation function
- Come with dual network ports, and support hand-in-hand connection

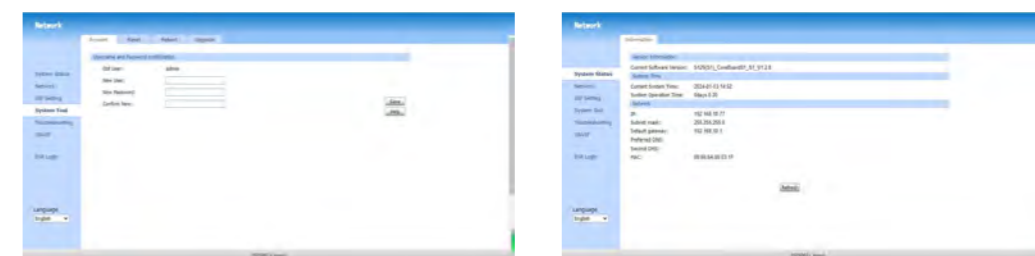
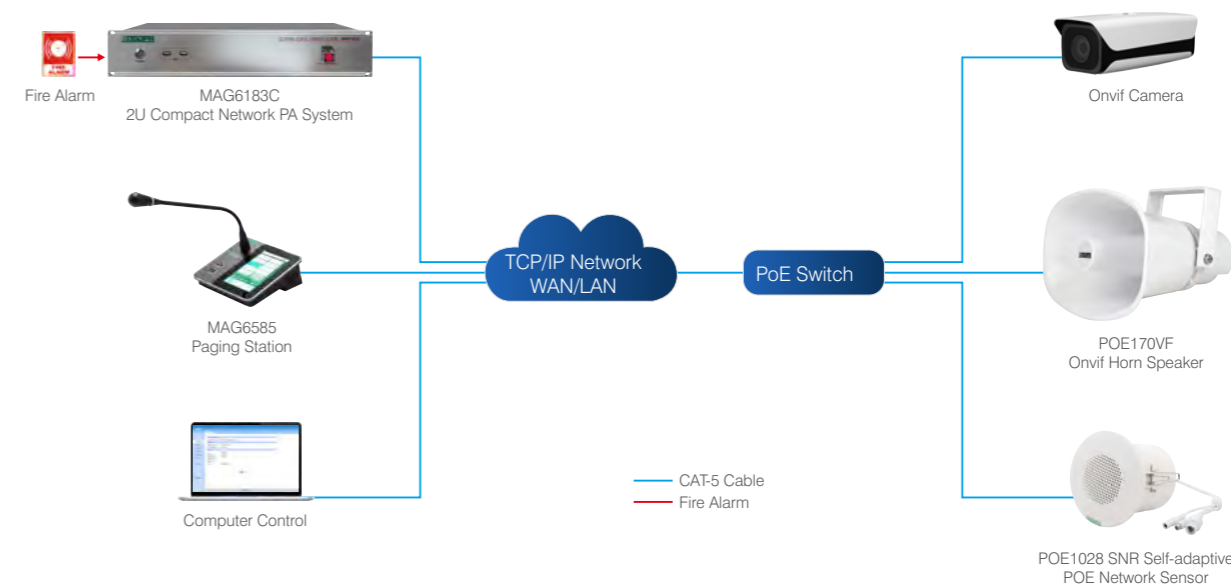
MAG6468 Intelligent Teaching Speaker



- Rated power: 4x15W
- Built-in linux system and professional audio processor chip
- All directional, 360° uniform sound field coverage
- With automatic SPL adaptation algorithm, AGC automatic gain algorithm, DRC dynamic range control
- With 1 Aux input and 1 Aux output
- Support background music, emergency paging, and alarm signals from the system host
- Support smart phone remote control
- With pre-set lighting effect
- Connection mode: IR, 2.4G, Bluetooth

MAG6000 Onvif IP Network System

Onvif (Open Network Video Interface Forum) Network System include Onvif cameras and Onvif horn speaker, which represent leading-edge solutions in surveillance and audio technology. In this system, it can realize the linkage between surveillance and audio. The camera will detect the area and send signal to the speaker, it will broadcast pre-recorded audio message automatically. Our product adhere to universal standards set by the Open Network Video Interface Forum, ensuring compatibility and interoperability across various platforms. These innovations offer flexibility, versatility, and ease of integration, empowering users to construct comprehensive and efficient surveillance and audio ecosystems tailored to their specific needs.



Software

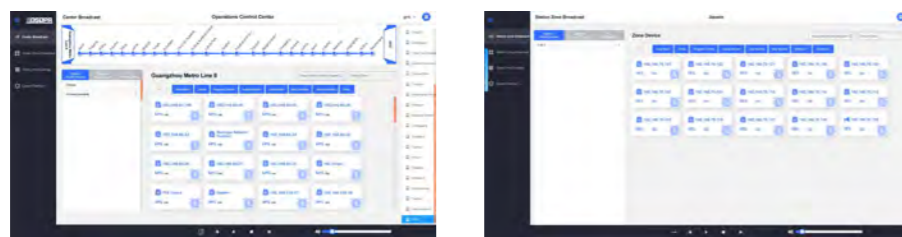
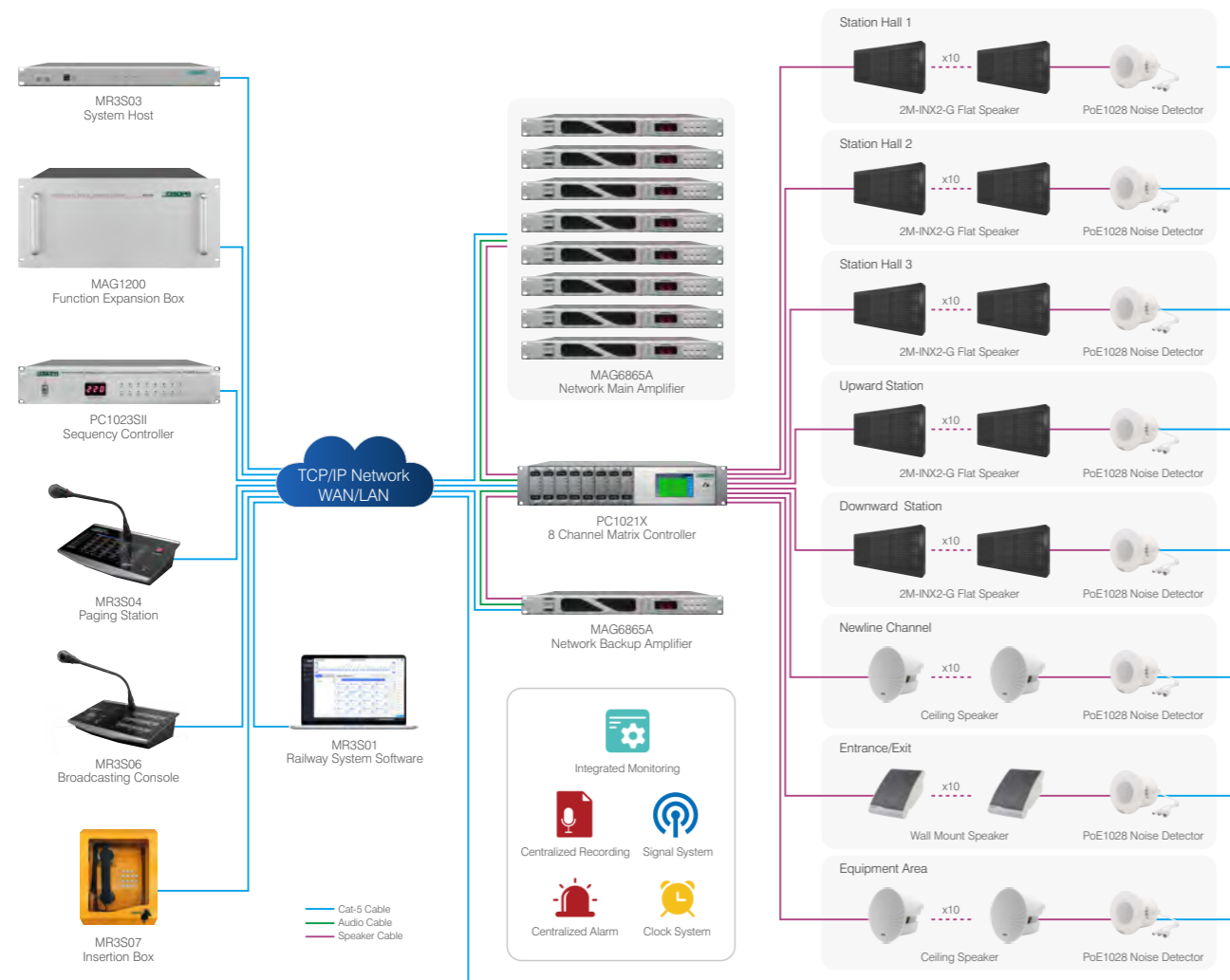
POE170VF Onvif Horn Speaker



- Rated power: 15W/8Ω
- Freq. Response: 350Hz-10kHz(±3dB)
- Sensitivity: 105±2dB
- MAX SPL: 117±2dB
- SNR: ≥70dB
- THD: ≤1%
- Receive SIP audio, ONVIF* audio and multicast audio
- IP66 rating for outdoor installations
- Power supply: DC24V/2A or POE48V

MAG6000 Railway PA System

The railway network PA system serves six main functions: announcing departures and arrivals, delivering safety information, providing service updates, disseminating general information, broadcasting emergency alerts, and issuing courtesy reminders. They convey essential information such as schedules, delays, and safety announcements. Operating these systems involves auto-line detection, selecting channels, adjusting volume levels, and speaking clearly into the microphone. It's crucial to monitor for feedback and maintain concise, informative announcements. Overall, railway PA systems enhance passenger experience and ensure efficient operations by disseminating timely and relevant information throughout the railway network.



MR3S01 Railway System Software

MR3S02 Railway Control Center Public Address Server (First-level control)

MR3S03 Railway Station Public Address Server (Second-level control)



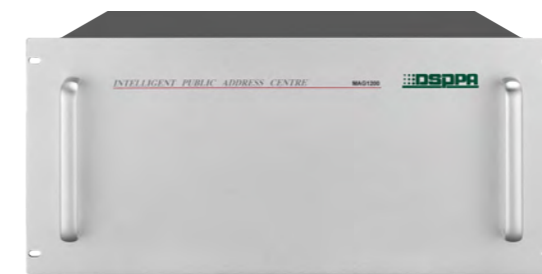
MR3S02



MR3S03

- Based on Linux operating system, support automatic switching between the active and standby systems
- The operating status of each zone of the whole station line can be displayed on the integrated monitoring system
- Provide quick broadcast operation and pre-defined broadcast function
- Support train arrival information broadcasting, background music broadcasting, service broadcasting, TTS voice broadcasting and timed broadcasting
- Support audio file distribution and update
- Any zone of the station line can be monitored, and all broadcasts in the station line can be recorded
- With a powerful broadcast matrix and built-in large-capacity space for program sources, which can be customized as needed
- With one-key all-zone alarm and manual alarm functions
- The batch processing function of the <shortcut key> and the priority of the program audio source are user-defined

MAG1200 Function Expansion Box



- 12 slots module extender of Railway network PA system
- Support 10M/100M self-adaptive TCP/IP protocol
- 5U aluminum alloy, 19" rack mounting design
- Power supply: AC220V/50Hz
- Support module: Network module, Aux input module, Record module, Emergency module, Surveillance Module

MR3S04/MR3S05

Railway PA System Paging Microphone



- Support 100/10Mbps adaptive TCP/IP network transmission
- With a 7" true-color touch screen and an aluminum alloy high-grade brushed industrial panel
- With a manual shortcut button for quick paging in case of emergency
- With a built-in 3W monitoring speaker for program pre-listening
- Support manual broadcasting, voice information broadcasting, and line broadcasting for all stations and zones of the whole line
- With 1-channel line input and 1-channel local line output
- Support group settings of network playback terminals
- Support paging between paging microphones.
- With user password and permission management.
- With an automatic intelligent microphone off function. The delay time to turn off the paging can be set for the caller

MR3S06

Railway PA System Compact Paging Microphone



- Support 100/10Mbps adaptive TCP/IP network transmission protocol
- With a manual shortcut button for quick paging in case of emergency
- With a built-in speaker for automatic monitoring
- Support manual broadcasting, voice information broadcasting, and line broadcasting for all stations and zones of the whole line
- Support group settings of network playback terminals

MR3S07

Railway PA System Intercom Phone



- The shell has waterproof, dustproof, damage-resistant functions
- There are dial combination keys on the panel, which can be used for zone paging, All-zone paging or group paging
- It has a handheld microphone function
- It has AC220 power supply function
- Supports network broadcasting function
- Dual network interface design
- Supports maximum 48kHz sampling rate 16bit digital audio stream decoding
- Embedded structure design, quick installation and easy to use

PC1021X

8 Channel Amplifier Matrix Controller



- Integrated with matrix switch and zone selector
- With touch screen to display working status
- Support connection with 70-100V power amplifier
- Support main and standby amplifier auto switch
- Real-time power testing and error detection
- With loading loop testing function
- Individual volume and tone controls for each zone
- Can be extended to be with DANTE function
- Power supply AC220V/50Hz, AC110V or DC24V is customized

POE1028

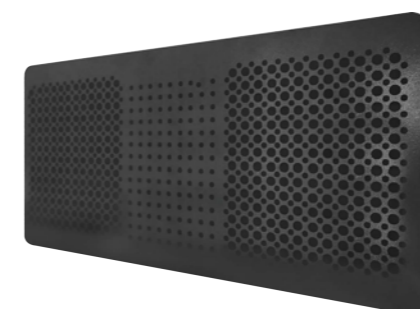
SNR Self-adaptive POE Sensor



- Cat-5 cable connect with POE switch
- Noise detection range 50dB-100dB
- Automatic feedback the real-time SNR to system host
- Host analyse the feedback information and auto adjust the speaker volume
- Setup the sensor to match a certain speaker
- Multiple sensors with independent control on different terminals respectively
- Power supply: POE48V

2M-INX2-G

Flat Panel Speaker



- Rated power: 50W
- Impedance: 200Ω
- Sensitivity: >89dB
- Two side directional speaker
MCMA structure, the sound field is evenly distributed
- Polymer nanomaterial vibrating membrane
- Built-in high quality transformer
Support anti-mildew, anti-moisture, anti-salt spray
- Dimension: 372×186×26mm

MAG6190 IP Network Extending Server



- With screen and button to view and set up working status
- Audio signal and control signal could be transferred to network terminals simultaneously
- With USB interface to connect with mouse or keyboard for easily operation
- Made of Aluminum alloy, easy to use
- Power supply: AC220V/50Hz

MAG6424 4 Channels Network Line Detector



- 4 channels audio line detection
- The detection range of impedance is 20-1600 ohms
- Each zone has the switch setting of line detection function
- Each zone has the function of line impedance detection and calibration
- Support 5 short circuit display: open circuit, overload, light load, and normal
- LED indicator status display
- Working when the system is idle and not to detect when it is busy
- Built-in buzzer, alarm when the line is abnormal
- Power supply: AC220V/50Hz

MAG6402 IP Network Audio Display Panel



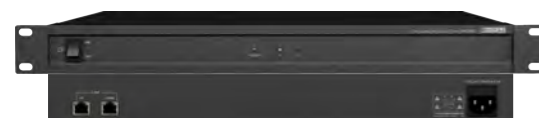
- IP network audio display terminal
- TFT true color touch screen control
- Can play local audio or the audio from the console
- Can play music, paging and alarm from the console
- Support remote paging to one zone or all zones
- Support IR remote control function
- 86 case on-wall installation design
- POE powered via Cat-5 cable, easy for installation
- Power supply: DC24V

MAG6405 IP Network Time Calibrator

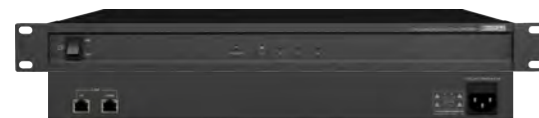


- With RJ45 connection interface, support 485 transmission protocol, the maximum transmission distance of more than 300 meters (the need for local DC power supply when more than 1500 meters)
- GPS time function can be realized
- With a telephone, SMS broadcast function

MAG6832/MAG6834 2/4 Channels Streaming Media Interface



MAG6832



MAG6834

- 1U rack mounted design
- 2/4 channels streaming transmission
- Based on Linux system, compatible with MAG6000 system
- Support Airplay, DLNA and Qplay
- Support network radio
- Dual network jack, support hand-in-hand linkage
- Control any network terminal receive the signal from the streaming media interface
- Power supply: AC100V-240V 50Hz/60Hz

MAG6551 Wireless Microphone System



- One wireless receiver with two handheld microphone
- Dual-channel PLL design
- UHF200 channel PLL digital lock automatic communication function
- Adopt IR frequency pairing
- With display screen (to display frequency, channel, squelch, level, etc.)
- With volume control for each channel
- AF output (using "XLR" sockets for separate output and mixed output)

MAG6808 IP Network Mixing Console



- Built-in 7 inch touch screen
- With 8 programmable button, one-key to broadcast or play music to any internet terminal
- With 4 mono balanced input and 2 stereo input interface, each channel with mute and gain control
- Each input channel with three band EQ adjustment and independent volume control
- With USB and bluetooth function
- With high fidelity MP3 player, support MP3, WMA, OGG audio format
- Can transfer local music to internet data streaming

WH-2RS/WH-2FRS 2 Channels Volume Controller



WH-2RS



WH-2FRS

- 5 levels volume adjustment
- Support two channels control at the same time
- One channel power 30W, two channels power 60W
- Support 4-16Ω input
- With DC12-24V Forced Insertion function (WH-2FRS)

MAG6410 Single Slot Network Module Extender



- Single slot module extender of IP Network PA System
- Support 10M/100M self-adaptive TCP/IP protocol
- 1 U slim design, 19" rack mounting design
- Power supply: AC220V/50Hz

MAG6412 Multiple Slots Network Module Extender



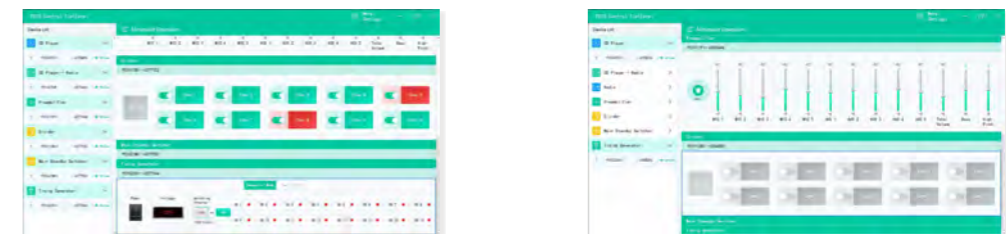
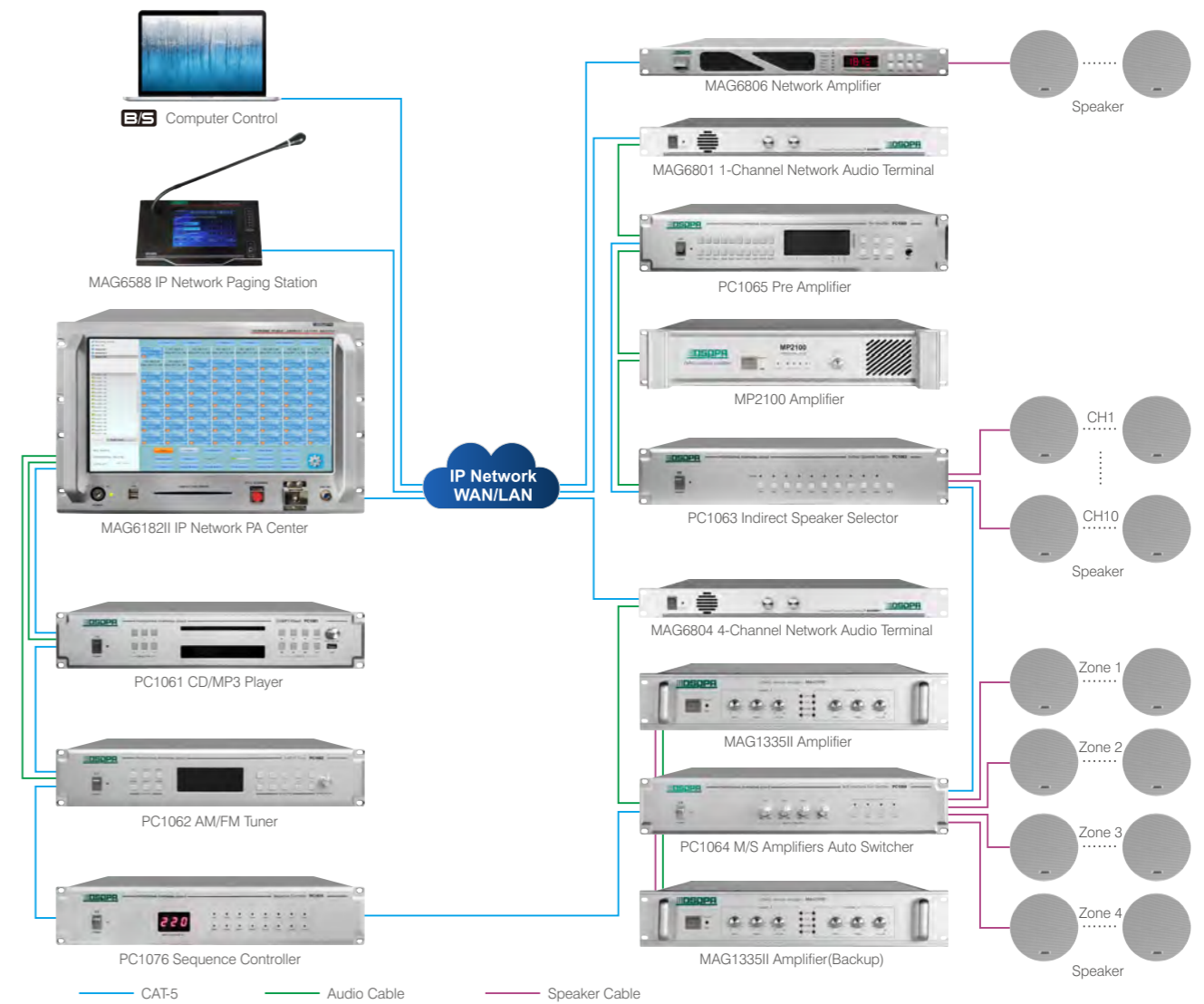
- 12 slots module extender of IP Network PA System
- Support 10M/100M self-adaptive TCP/IP protocol
- 4 U aluminum alloy, 19" rack mounting design
- Power supply: AC220V/50Hz

MAG6000 System Network Modules

MAG6110		Ethernet Switches Module
MAG6111M		Power Management Module
MAG6111S		Power Slave Module
MAG6113		Monitor Module
MAG6114		Hard Disk Module
MAG6411		Audio Adapter Module
MAG6416II (Optional)		32 Channels Emergency Interface Module
MAG6418 (Optional)		Telephone Paging Module

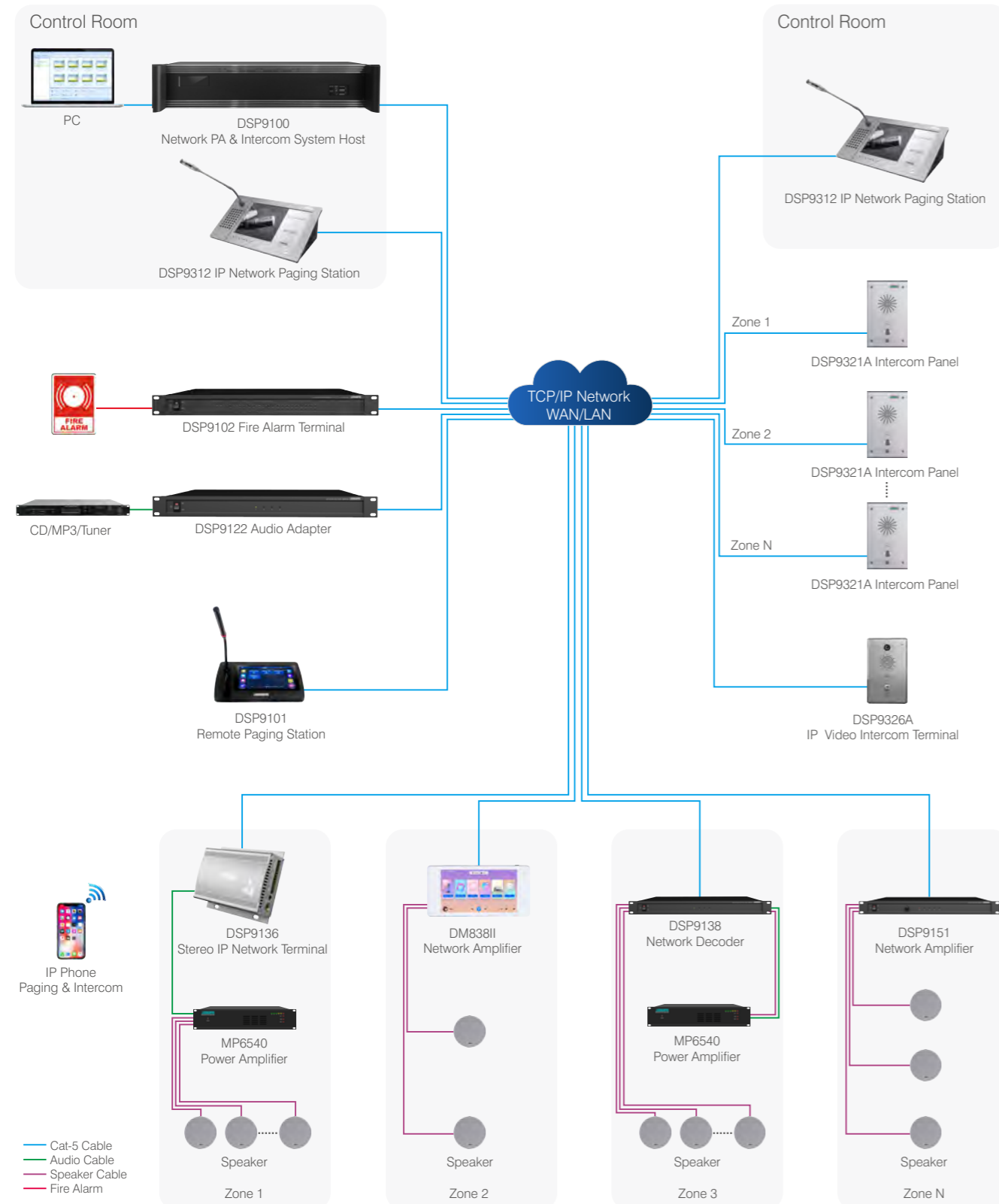
This is a highly integrated and centralized control PA system. It consists of control software, CD player, multimedia player, FM tuner, preamplifier, zone selector, M/S amplifier switcher, and sequence controller. It is connected via CAT5 cable and is easy to install.

As an IP based PA audio system, it can support remote paging, emergency broadcasting, and zone management, as well as signal transmission via network, enabling a more stable and farther transmission.



Software

DSP9000 Network PA & Intercom System



DSP9100 (2U) / DSP9100 (7U) IP Audio PA & Intercom System Host



DSP9100 (2U)



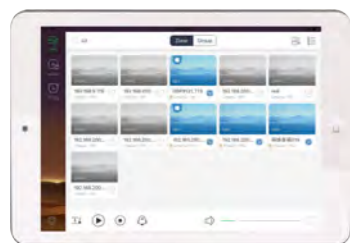
DSP9100 (7U)



- 19" standard rack mounted
- IP based audio system, support LAN and WAN
- Paging for one zone, group or all zone
- Integrated with broadcasting, emergency alarm, remote paging, voice and video intercom, monitoring and TTS function
- Windows or Linux system optional
- B/S framework, easy to login the server and control the system
- Intelligent VOIP relay server, could bridge connect with Cisco, Avaya, HUAWEI, 3CX etc.
- Support linkage with camera, realize broadcasting and monitor
- 24 hours working, high reliability and stable
- Multiple USB and VGA interfaces, convenient for expansion.
- Built-in 17.3 inch touch screen for 7U server, display group information, zone status, program list, and timing information
- Hidden push-pull keyboard and Touch Pad for 7U

	DSP9100 (2U)	DSP9100 (7U)
CPU		Intel® Core™ I5 4430 3.0GHz
RAM		4G/DDR3
Hard Disk		120G SSD
Display Screen	-	17.3" 1920x1080, resistive touch screen
Video Interface		VGA, HDMI
USB		Front: USBx2, Rear: USBx4
Support Protocols		TCP/IP, UDP, ICMP, IGMP (Multicast)
Network		RTL8111F Gigabit Network Card Chip, WOL/PXE
Power Input		ATX Wide Voltage Power Supply (AC180V-240V/47Hz-63Hz/7/3.5A)
Temperature & Humidity		-10℃~50℃, ≤90%RH (No condensation)
Dimension	88x490x335mm	328x484x340mm
Weight	5.9kg	13.4kg

DSP9100S Network PA System Software



iPad Software



PC Software

DSP9000 Network PA & Intercom System integrates network PA system and SIP intercom system together. It is simple to set up and reliable to use. Comparing to traditional IP audio system, it is easy to set up (no need of IP address setting), easy to use (plug and play), more reliable (support online and offline running). The system includes all kinds of network terminals like Network System Host, Network Paging Station, IP Speaker, IP Audio Terminal, IP Amplifier, IP Fire Alarm Panel, Intercom Telephone, Intercom Panel, etc. It offers a new IP audio solution to medium to large audio projects such as hotel, supermarket, shopping mall, resthome, school, etc.

DSP9101 IP Network Paging Station



- Based on TCP/IP protocol
- 7" TFT true-color LCD touch screen
- Graphical zone management
- Support grouping control
- Built-in chime for paging reminder
- 1 Aux input & output, 2 MIC input
- 1 EMC output, 1 short circuit output
- Support off line paging and control
- Power supply: AC100V-240V/50Hz

DSP9312 IP Network Paging Station



- Built 10.1 inch LCD touch screen
- It can control up to 200 zones, with single zone selection, multiple zone selection, and all zone selection
- Integrated with intercom, broadcast, monitor, supervise, and music playing
- Can display the followed zones and groups
- Support max 9 zones monitoring information
- With multi-level indication light for paging status
- Save the recording file and running log
- The microphone will turned off automatically after no signal input within the setting time
- The screen backlight illumination time and brightness are adjustable
- With user password and authority management
- Power supply: POE48V

DSP9312NS Server-free Intercom Paging Station



- 10.1" TFT true color LCD + capacitive touch screen, supporting five-point touch control
- It has single, multiple, one-click selection functions of the zones
- It can operate intercom and broadcasting functions for zones and groups
- It supports SIP protocol video talk
- It supports terminal incoming call alerting
- It supports PoE network interface
- Featured by multi-segment level indication
- Power supply: DC12V/2.5A

DSP9102 IP Network Fire Alarm Terminal



- Based on TCP/IP protocol
- Support 32 fire alarm signal access
- Support short circuit and 5V-24V signal
- Alarm audio message adjustable via system
- Alarm activating zones adjustable via system
- Support DHCP/static IP, support LAN and WAN
- Support off line paging and control
- 1U slim design, space and cost saving, aluminum alloy panel
- Power supply: AC220V/50Hz

DSP9122/DSP9124 IP Network Audio Adapter



DSP9122



DSP9124

- Based on TCP/IP protocol
- Support 2/4 audio inputs via RCA interface
- Support DHCP/static IP, support LAN and WAN
- 1U slim design, space and cost saving, aluminum alloy panel
- Power supply: AC220V/50Hz

DSP9131/DSP9134

IP Network Audio Terminal



DSP9131



DSP9134

- Based on TCP/IP protocol
- 1/4 network audio output of RCA interface
- 1/4 local audio inputs of RCA interface (priority: network audio > local audio)
- DSP9131 with amplifier loop detection function
- 1U slim design, space and cost saving, aluminum alloy panel
- Power supply: AC100V-240V/50Hz/60Hz

DSP9151/DSP9152/DSP9153/DSP9154

IP Network Amplifier



- Based on TCP/IP protocol
- Class-D digital amplifier module
- Support DHCP/static IP, support LAN and WAN
- 70V/100V speaker output switchable
- Rated power: 60W/120W/250W/350W
- 1U slim design, space and cost saving, aluminum alloy panel
- Power supply: AC220V/50Hz

DSP9108

Network Audio Adapter Module



- Built-in independent control module, stereo audio source real-time acquisition
- Customized the input name of per channel via management software
- 10/100M adaptive, support DHCP or static IP
- Supports PCI slots, PCI or DC5V power supply, cost savings
- The module supports the 2U or 7U network system host

DSP9138

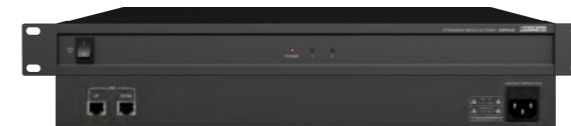
Network Decoder with Power Splitter



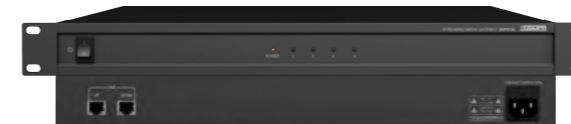
- Based on TCP/IP protocol, support CMP and IGMP, support cross-Net segment working mode
- Support working offline and without host
- Support signal detection of external 70V/100V amplifier
- With EMC OUT interface, connectable to speaker controllers
- With 8 power partition output, independent on/off switch of each channel
- Support self-inspection function when starting up, restore original functions automatically when fault appears
- Support Web login to set up
- Power supply: AC100V-220V/50Hz/60Hz

DSP9142/DSP9144

Streaming Media Interface



DSP9142



DSP9144

- 1U rack mounted design
- Based on Linux system, compatible with MAG6000 and DSP9000 system
- Support Airplay, DLNA and Qplay
- Support network radio
- Dual network jack, support hand-in-hand linkage
- Control any network terminal receive the signal from the streaming media interface
- Power supply: AC100V-240V/50Hz/60Hz

DSP9162/DSP9164

2/4 Channels Audio Transfer Terminal



DSP9162



DSP9164

- With 2 or 4 channels audio transfer
- Compatible with DSP9000 networked system
- Can receive audio streams and transmit it to the terminal according to the setting
- Support webpage operation transit setting
- Support single zone or group streaming forward
- Support different playback sources issued by the transfer host

DSP9103

GPS+BDS Compass Timing Calibrator



- Based on TCP/IP protocol
- Compass and GPS dual-module antenna
- Support POE and DC power supply
- Auto IP address setting, plug-and-play
- UTC date and time auto calibration
- Support DHCP/static IP, support LAN and WAN
- Power supply: DC9V-18V

DSP917WH

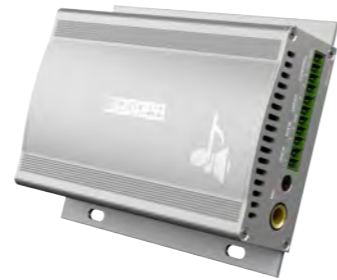
IP Touch Screen Volume Controller



- Small volume modular design, touch control module
- LCD indicator through the panel
- Powered by +48V POE switches
- 10/100M adaptive, supporting DHCP/static IP
- Support partition unbinding on the server interface
- Support setting permissions and holding to unlock the account
- Support setting to control the volume of one or more devices

DSP9136/DSP9136E

Stereo IP Network Terminal



- Based on TCP/IP protocol, support SIP intercom
- With EMC input and output
- Priority level:
- 100V>network audio>local Mic>AUX>built-in audio
- Support SIP protocol, support SIP intercom paging
- Support AC power, DC power and POE power
- Support off line auto running after system set up
- With built-in 2x6W/8Ω stereo digital amplifier
- DSP9136E need POE power supply
- Power supply: AC100V-240V, DC12V-24V

DSP919WH

IP Touch Screen Volume Controller



- Small volume modular design, touch control module
- LED indicator through the panel
- Powered by +48V PoE switches
- 10/100M adaptive, supporting DHCP/static IP
- Support partition unbinding on the server interface
- Support setting permissions and holding to unlock the account
- Support setting to control the volume of one or more devices
- Support SD card, Bluetooth

DSP6604N/DSP6606N/DSP6608N

IP/SIP Network Wall Mount Speaker



- Rated power: 2x20W/2x30W/2x40W @8Ω
- Freq. Response: 95Hz-20kHz/80Hz-20kHz/65Hz-20kHz
- Sensitivity: 90±2dB/90±2dB/91±2dB
- MAX SPL: 103±2dB/105±2dB/106±2dB
- Support off line running
- Power supply: AC100V-240V/50/60Hz

DSP203N/DSP403N

IP/SIP Network Indoor Column Speaker



- Rated power: 2x15W/2x30W
- Freq. Response: 20Hz-20KHz
- Sensitivity: 90±2dB/94±2dB
- MAX SPL: 99±2dB/108±2dB
- Support off line running, built-in Memory: 4G
- Power supply: AC90V-240V/50Hz/60Hz/1A

DSP406N/DSP406E

IP Network Wall Mount Speaker



- Rated power: 10W
- Freq. Response: 20Hz-20KHz
- Sensitivity: 91±2dB
- MAX SPL: 99±2dB
- Driver unit: 4.5"x1
- DSP406E support POE power supply
- Power supply: DC12V/3A

DSP205N/DSP405N

IP/SIP Network Waterproof Column Speaker



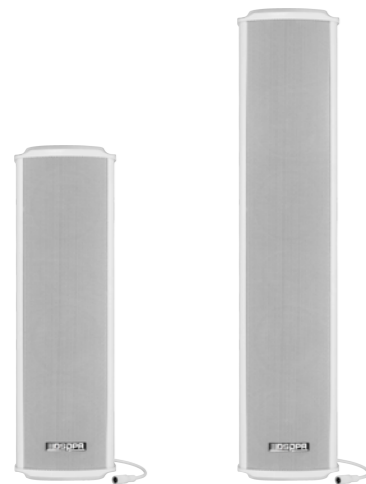
- Rated power: 30W/60W
- Freq. Response: 140Hz-14KHz
- Sensitivity: 89±2dB/93±2dB
- MAX SPL: 102±2dB/109±2dB
- Support off line running, built-in Memory: 4G
- Aluminum housing, IP65 waterproof design
- Power supply: AC100V-240V/50Hz/60Hz

DSP602E
POE Network Ceiling Speaker



- Rated power: 10W/8Ω
- Freq. Response: 80Hz-16kHz
- Sensitivity: 92±2dB
- MAX SPL: 100±2dB
- Driver unit: 6.5"x1"
- Power supply: DC24V/1A or POE48V

DSP6114E/DSP6116E
20W/40W POE Network Column Speaker



DSP8114E

DSP8116E

- Rated power: 20W / 40W
- Driver unit: 4"x2, 1"x1 / 4"x4, 1"x1
- Freq. Response: 180Hz-16kHz
- Sensitivity: 88±2dB / 92±2dB
- MAX SPL: 101±2dB / 107±2dB
- SNR: ≥76dB, THD: ≤1%
- Power supply: POE48V or DC24V
- Dimension: 117×137×418mm / 117×137×643mm
- Net weight: 2.9kg / 5kg

DSP255E
IP Network Waterproof Column Speaker



- Rated power: 20W/8Ω
- Freq. Response: 50Hz-18kHz (±3dB)
- SNR: ≥70dB, THD: ≤1%
- Driver unit: 3"x2+2"x1"
- Support TCP/IP protocol
- All-weather waterproof column speaker
- Power supply: POE48V

DSP8114N/DSP8116N
IP/SIP Network Outdoor Column Speaker



DSP8114N

DSP8116N

- Rated power: 60W/120W
- Freq. Response: 90Hz-16kHz
- Sensitivity: 91±2dB/94±2dB
- MAX SPL: 108±2dB/115±2dB
- SNR≥81dB, THD≤0.1%
- Power supply: AC100V-220V/50Hz/60Hz

DSP170E
POE Outdoor Network Horn Speaker



- Rated power: 15W/8Ω
- Freq. Response: 350Hz-10kHz
- Sensitivity: 105±2dB
- MAX SPL: 117±2dB
- Driver unit: 2.5"x1"
- Power supply: DC24V/2A or POE48V

DSP9313
SIP Video Phone



- Support TCP/IP and VoIP/SIP protocol
- Support communication across network segments
- Support up to 6 SIP user accounts
- Support group calling and 3-way conference
- Support hand-free SIP calling
- Can communicate with DSP9000 PA System
- Power supply: DC12V or POE48V

DSP270E
50W POE Horn speaker



- Rated power: 50W/4Ω
- Freq. Response: 100Hz-16kHz(±3dB)
- MAX SPL: 120±3dB
- Power supply:DC 24V & POE
- With SIP intercom, and network broadcast function
- 10/100M self-adaptive, support DHCP/static IP
- Support WEB background management
- With built-in digital amplifier
- All-weather design

DSP9315
SIP Intercom Phone (POE is customized)



- 2.4" Colour display screen
- User-friendly interface design
- Support multiple users to use switching and configuration
- Secure and complete configuration protocol
- High compatibility: compatible with SIP-based IP PBX/soft switch/IMS platforms such as Asterisk, Broadsoft, 3CX, Elastix, Zycoo, etc.
- Power supply: DC5V or POE48V

DSP9331/DSP9332

Emergency Intercom Terminal



DSP9331 DSP9332

- Built-in 3W speaker and microphone
- Built-in 2*10W digital amplifier
- Support POE and DC power supply
- Support SIP/VOIP protocol, realize two-way intercom
- With 1 alarm input and 1 alarm output
- Standard RJ45 interface, across network segments and routes
- Comply with IP65 protection level

DSP9341/DSP9342

Network Visualized Intercom Terminal with Camera



DSP9341 DSP9342

- Visualized intercom terminal with camera
- Built-in 3W speaker and microphone
- Built-in 2x10W digital amplifier
- Support POE and DC power supply
- Support SIP/VOIP protocol, realize two-way intercom
- With 1 alarm input and 1 alarm output
- Standard RJ45 interface, across network segments and routes
- Comply with IP65 protection level

DSP9327A

IP Waterproof Telephone with Loudspeaker and Warning Light



- Aluminum alloy material
- IP68 waterproof level
- Support SIP protocol
- Support IP call function
- Phone call warning and flashing
- Phone call auto broadcasting
- Built-in amplifier and buzzer and speaker

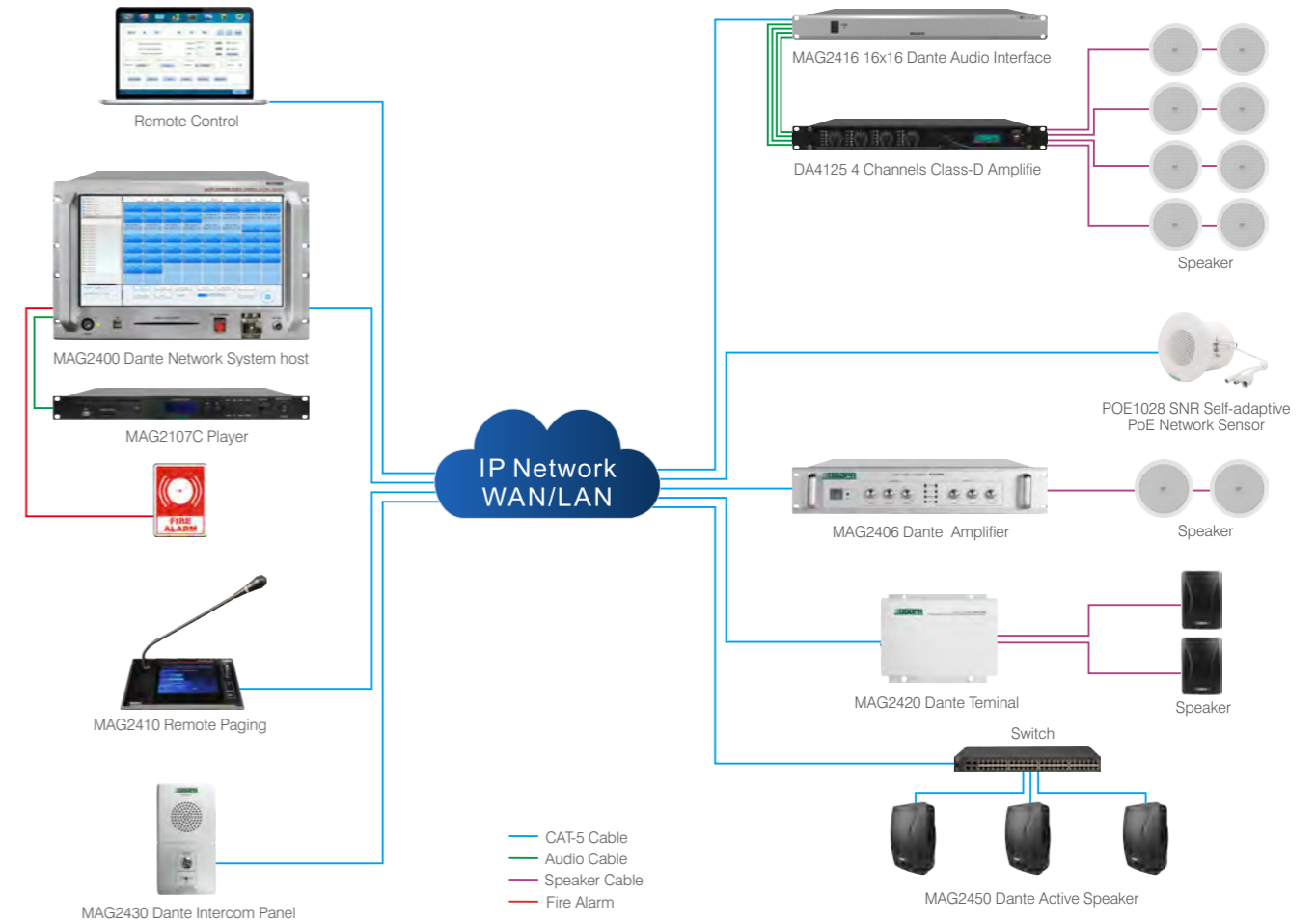
DSP9328A

IP Waterproof Hands-free Telephone with Loudspeaker and Warning Light



- Aluminum alloy material
- IP68 waterproof level
- Support SIP protocol
- Support IP call function
- Phone call warning and flashing
- Phone call auto broadcasting
- Hands-free
- Built-in amplifier and buzzer and speaker

MAG2400 Dante Network PA System



MAG2400 Dante Intelligent PA System



MAG2410 Remote Paging Console



MAG2422/MAG2416 2x2 / 16x16 Dante Audio Interface



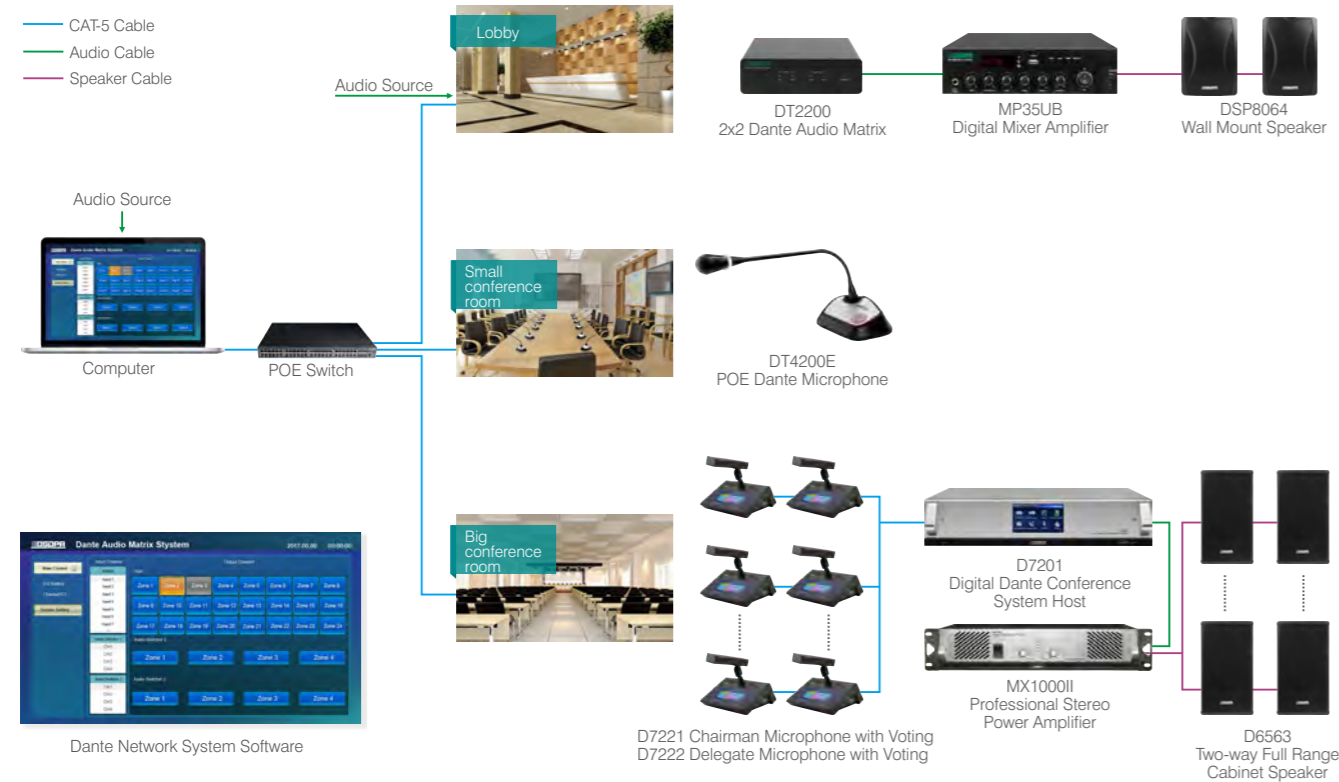
MAG2420 Dante Network Wallmount Terminal with Amplifier



MAG2450 Dante Active Speaker



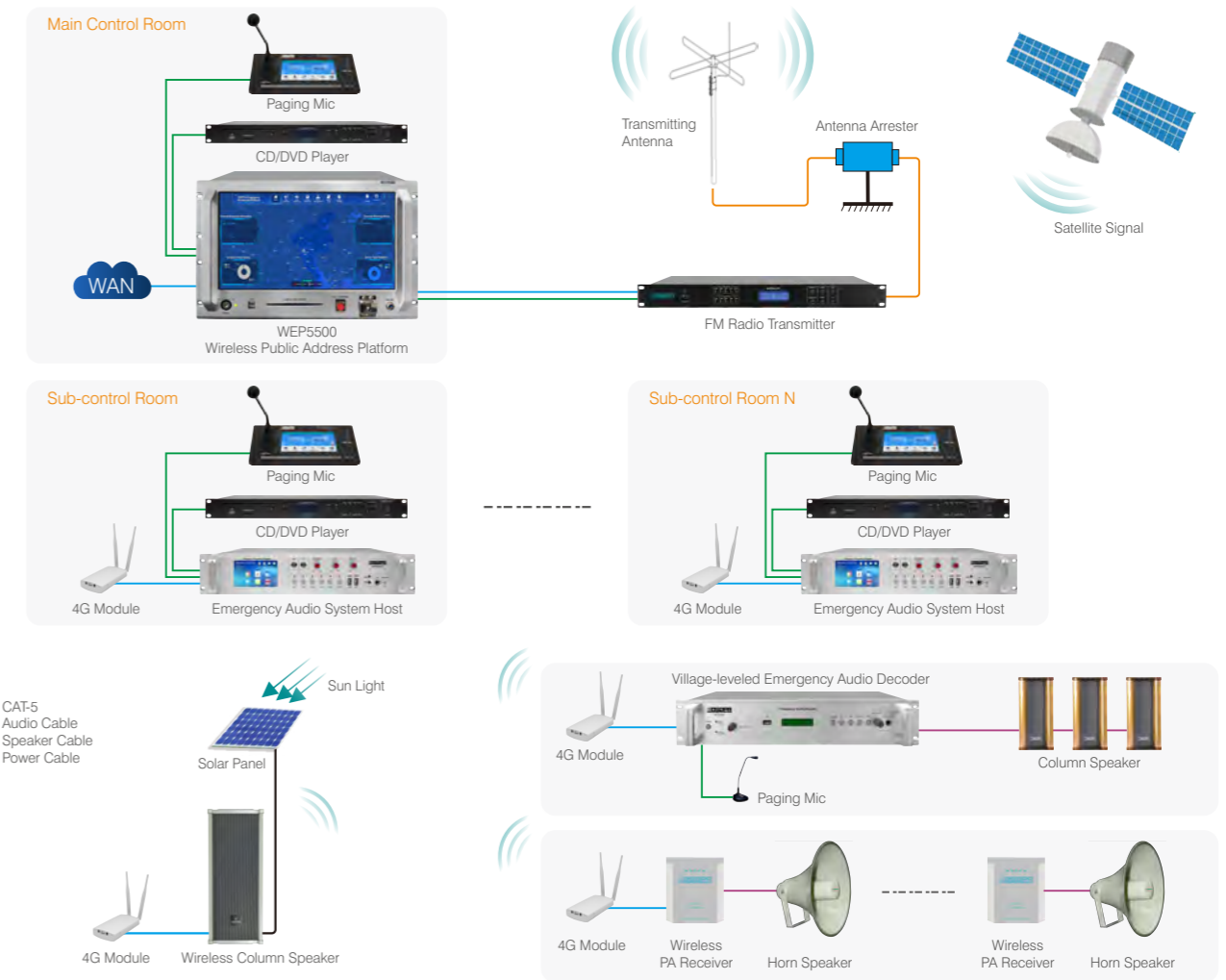
DT2200 Dante Network System



4G Cloud Network Wireless PA System

4G Cloud Network Wireless PA System is a network PA system based on TCP/IP protocol and adopts transmission methods of 4G network, Internet and Radio Digital Signal.

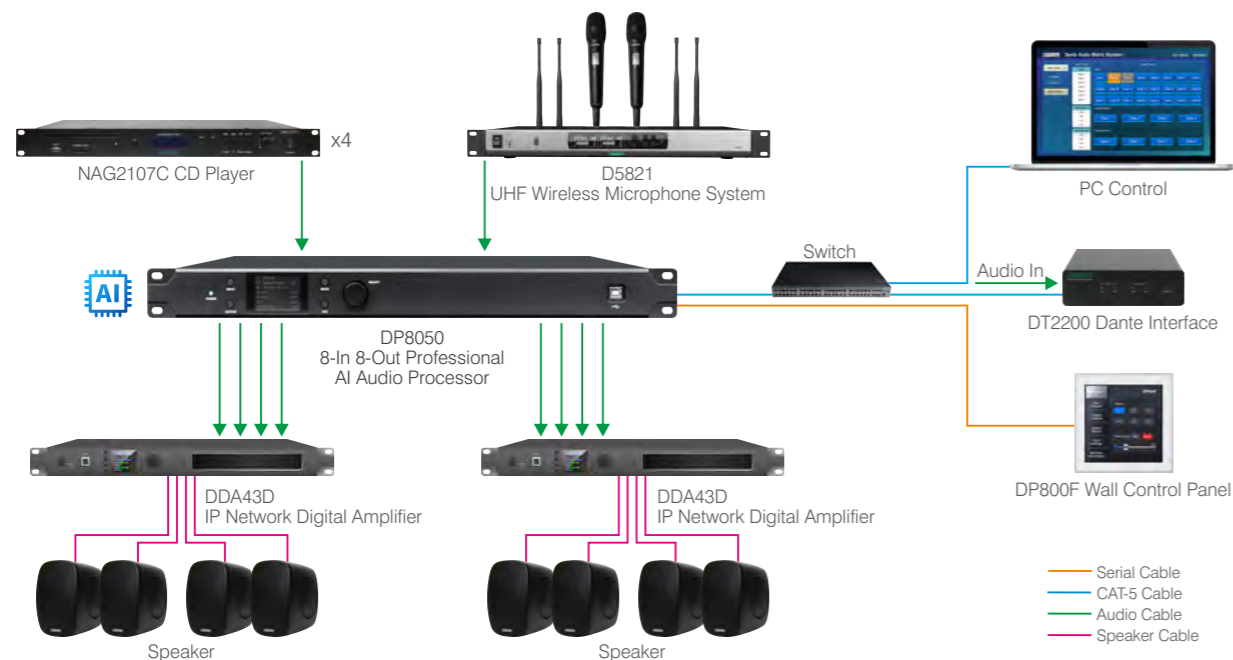
Functions: emergency announcement, daily information sharing, siren notice, background music, etc.



DP8050 8-In 8-Out Professional AI Audio Processor



- With 8 analog balanced inputs and 8 analog balanced outputs
- With 48V phantom power per input channel
- With microphone amplifier per input channel, with gain adjustable from 0-40dB in 1dB steps
- With stereo USB sound card function for playback and recording
- With USB port for computer software control and USB sound card transfer function
- With RS232 serial port for computer software control and central control function
- With RS485 serial port for computer software control and central control function
- With network interface for computer software control and central control function, managing multiple devices simultaneously through network connection
- With 8 external GPIO ports
- With a variety of DSP functions, such as AFC(Adaptive Feedback Cancellation), AEC(Acoustic Echo Cancellation), ANC(Active Noise Cancellation), AGC(Automatic Gain Control), AUTO MIX(Automatic Mixing), MATRIX MIX(Matrix Mixing), Noise Gate, PEQ(Parametric Equalizer), Delay, FIR Filter, High and Low Pass Crossover, Compressor, and Limiter
- With 15-band PEQ for the input and 10-band PEQ for the output
- With 2000ms delay per input channel and 2000ms delay per output channel
- With 512 Tap FIR per output channel
- With 60 preset memory points
- Support control box control
- Support Android APP network control
- Support archive locking and setting parameters hiding to ensure the technical security of the project



DP8084/DP1684 8/16 channels Conference Audio Processor with 4x4 Dante



DP8084



DP1684

- 8/16 channels analog audio input & 8 channels analog audio output
- With 4x4 dante input and output
- With AEC echo cancellation and ANC noise cancellation function
- With USB, RS232, RS485, RJ-45 port for computer control and central control
- Each input with 48V phantom power
- Each input with feedback suppressor
- With 8 channels GPIO interface
- With DSP function: AFC, AEC, ANC, AGC, AUTO MIX, MATRIX MIX, Noise gate, PEQ, delay Device, high and low frequency division, compressor, limiter, FIR filter(DP8084), PHASE filter(DP1684)
- Stereo USB sound card function, support playback and recording
- With 15/8 bands PEQ adjustment for input and 10/8 bands PEQ adjustment for output
- With video tracking function, support PELCO-D, PELCO-P, VISCA protocols
- USB drive automatic connect with software, and support RS232 control
- Support remote control of mobile APP software
- Power supply: AC100V-240V 50/60Hz
- Dimension: 483x265x44.5mm
- Net weight: 3.3kg

DP800F Touch Screen Control Panel



- Master volume adjustment
- Support each input and output volume adjustment
- Support archive call function
- 4" screen, with RS485 interface
- Resolution ratio:320*240
- Dimension 86x86x27.5mm

DDA23D/DDA43D

IP Network Digital Amplifier with DSP and Dante



DDA23D



DDA43D

- IP network amplifier with dante
- Support 70V/100V or 4-8Ω signal output
- Rated power 2x500W@4Ω, 4x500W@4Ω
- Built-in DSP processor
- Support USB,TCP/IP,RS232,RS485
- Support XLR balanced input and RCA unbalanced input
- Support stereo, bridge, mono channel, free matrix mode, one-key to switch
- Input sensitivity adjustable 0dB/6dB, setting from software or LCD screen
- Power supply AC90V-260V

DDA408D/DDA410D/DDA415D

Dante 4x4 Matrix Digital Amplifier with DSP



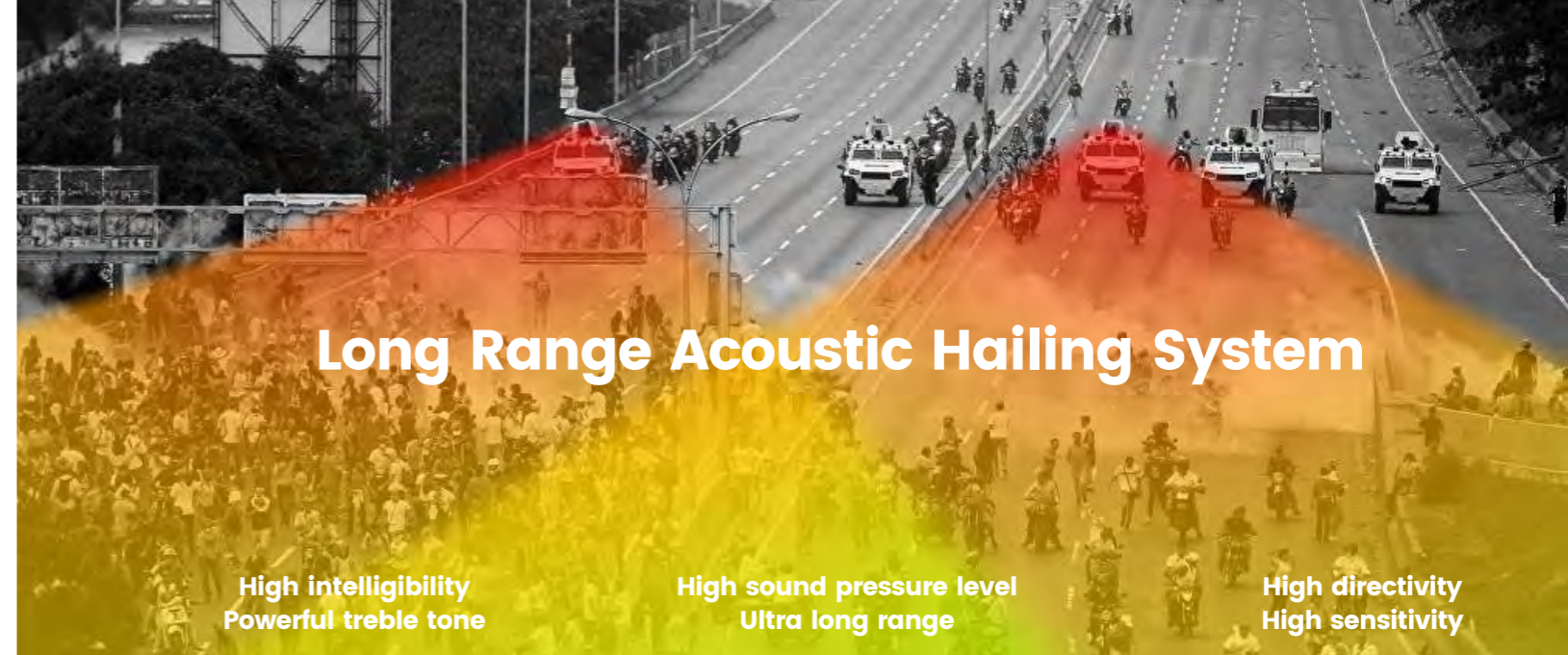
- 4x4 Dante matrix network amplifier
- Rated power 4x800W/4x1000W/4x1500W
- Support 70V/100V or 4-8Ω signal output
- Built-in DSP processor
- Support USB,TCP/IP,RS232,RS485
- The working status of amplifier could be monitored remotely in real time
- Support XLR balanced input and RCA unbalanced input
- Support stereo, bridge, mono channel, free matrix mode, one-key to switch
- Input sensitivity adjustable 0dBu/6dBu/12dBu, setting from software or LCD screen
- Power supply AC180V-264V
- Controlled by software, could also control matrix system and professional processor



Android Software



PC Software



Long Range Acoustic Hailing System

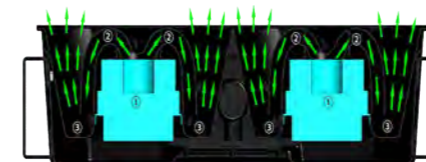
High intelligibility
Powerful treble tone

High sound pressure level
Ultra long range

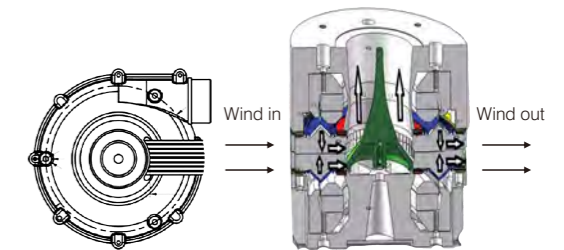
High directivity
High sensitivity

Advanced Technology

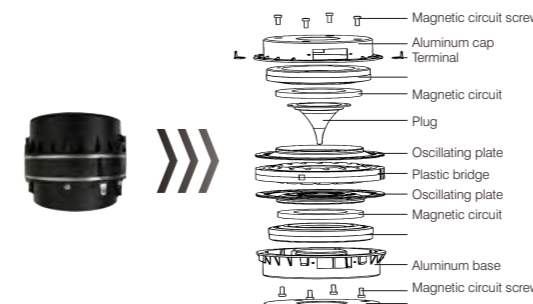
The design of the three-section bypass horn



High efficiency air cooling system design



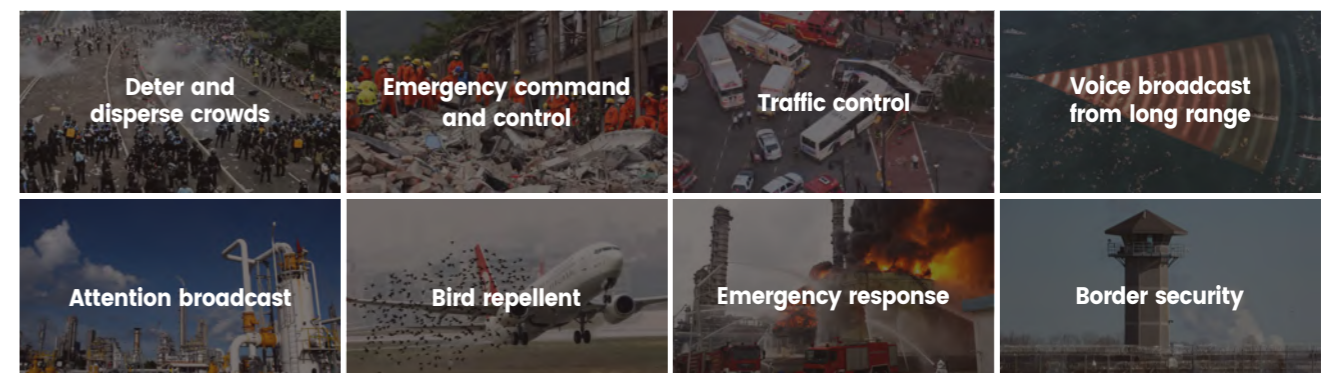
Conversion transducer



Carbon Fiber Material



Purposes



LRAS1515A 150W Acoustic Hailing Device

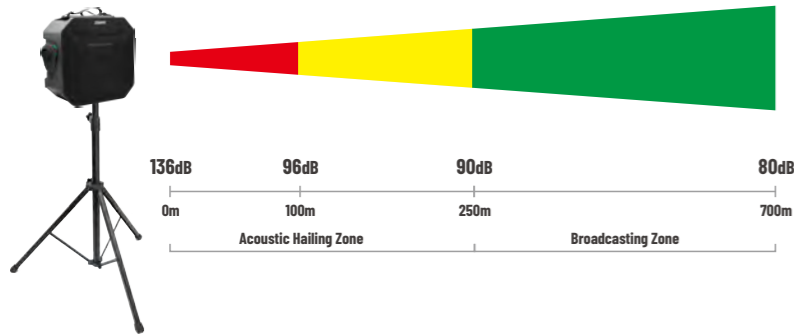


- SPL (1m) is up to 136dB
- Up to 700m clear sound transmission
- Support USB as audio source
- Support one key to play the alarm or dispel sound
- The sound wave is directional to avoid sound distortion caused by echo interference
- Optimized sound wave dispelling and waveguide structure to pass the sound through the siren, engine noise and noisy crowd, and be accurately heard by each target person
- The sound beam angle is 30°
- Handheld and portable, friendly in use and flexible in control



Acoustic Hailing Player

Handheld Microphone



Flight Case Packing



LRAS1515A	RMS Power 150W	Impedance 4Ω	Max SPL 136±2dB	Sensitivity 116±2dB	Freq. Response 340Hz-6kHz	Waterproof Level IP55	Cover Angle horizontal 30°x vertical 30°	Dimension 365x373x217mm	Net Weight 7.8kg
-----------	-------------------	-----------------	--------------------	------------------------	------------------------------	--------------------------	---	----------------------------	---------------------

LRAS1530A 300W Acoustic Hailing Device

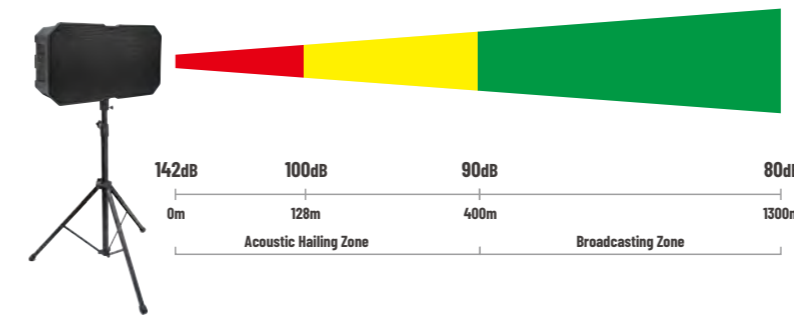


- SPL (1m) is up to 142dB
- Up to 1300m clear sound transmission
- Support USB as audio source
- Support one key to play the alarm or dispel sound
- The sound wave is directional to avoid sound distortion caused by echo interference
- Optimized sound wave dispelling and waveguide structure to pass the sound through the siren, engine noise and noisy crowd, and be accurately heard by each target person
- The sound beam angle is 30°
- Handheld and portable, friendly in use and flexible in control



Acoustic Hailing Player

Handheld Microphone



Flight Case Packing



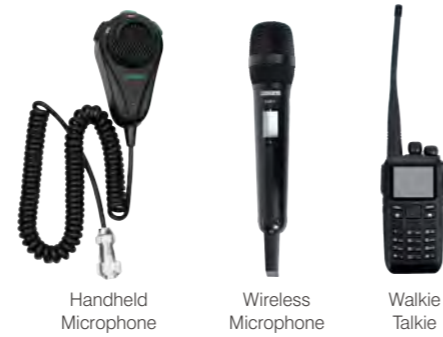
LRAS1530A	RMS Power 300W/4Ω	Max SPL 139±2dB	Sensitivity 116±2dB	Freq. Response 400Hz-6kHz	STIPA 0.85	Cover Angle horizontal 30°x vertical 30°	Dimension 645x175x365mm	Net Weight 14kg
-----------	----------------------	--------------------	------------------------	------------------------------	---------------	---	----------------------------	--------------------

WEP5590

150W Portable Emergency Broadcast System



- SPL (1m) is up to 136dB
- Up to 700m clear sound transmission
- Adopt new portable mobile design
- Transmit sound over a long distance with high intelligibility
- Support wired and wireless microphones
- Support FM broadcast function
- With two-way radio calling function
- With built-in DC24V tri-element lithium battery
- With built-in TF card for emergency audio storage
- Can play recordings and MP3/WAV audio files stored on a USB flash drive
- Support live recording function for easy event recording and tracing



Handheld Microphone Wireless Microphone Walkie Talkie



Host Alarm Panel

The main unit's alarm panel features five alarm buttons for earthquake, fire, violence, stampede and drowning. It allows for the quick, one-touch playback of corresponding prompts and alarm sounds, including:

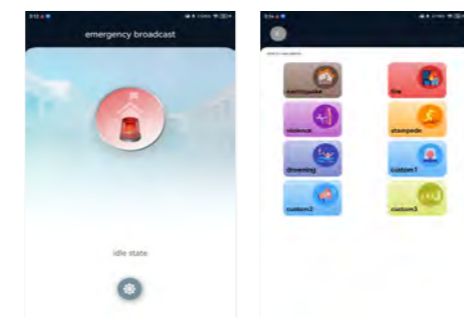
FM radioreceiving module,
Wireless microphone receiving module,
Wireless walkie-talkie receiving module



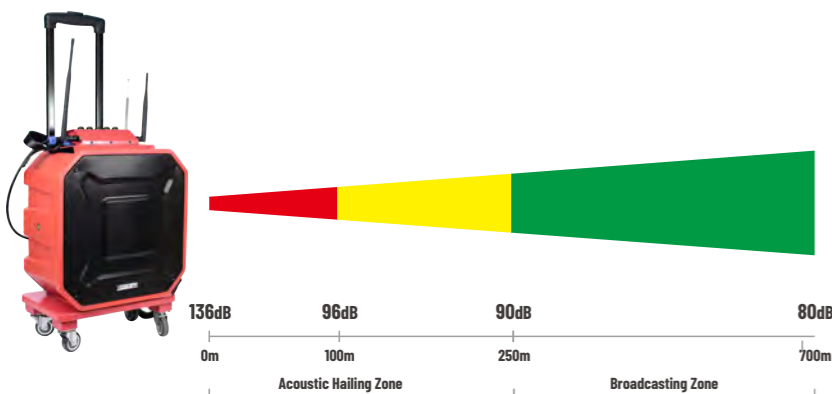
Host Back Panel



Removable Base



App



WEP5590	RMS Power	Max SPL	Distortion	Freq. Response	Waterproof Level	Cover Angle	Dimension	Net Weight
	150W	136±2dB	≤1%	400Hz-8kHz(±3dB)	IP55	horizontal 30°x vertical 30°	435x230x540mm	15kg

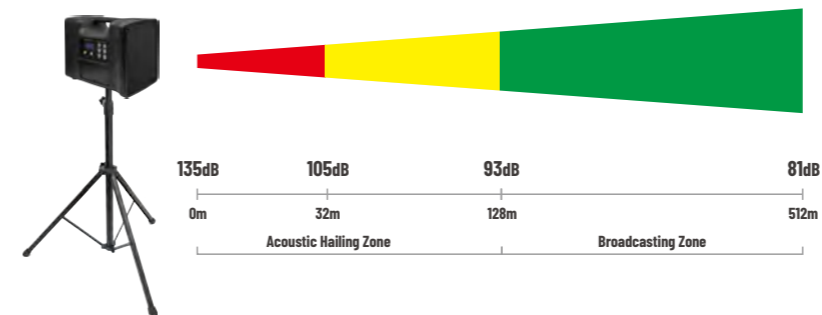
LRAS150

150W Mass Notification Speaker



(customize)

- Adopts voice coil air cooling technology, cooling fast
- Rated power 150W, customized version more than 500W
- Supports parallel connection of multiple devices on vehicle and shipboard
- Can be carried like a shoulder bag, backpack or handbag, and can also be installed on a tripod
- Built in MP3, FM, support Bluetooth as audio source
- Support one key to play the alarm or dispel sound
- Support wireless handheld microphone for mass notification
- Paging through this product can be recorded to USB disk and supports playback
- Support phone call from another region to broadcast in the whole system
- Power supply: Built in battery, charged by DC12V adaptor



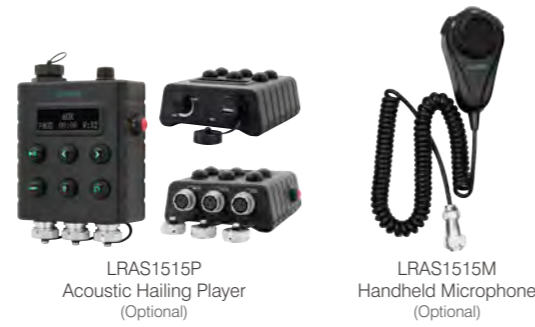
LRAS150	RMS Power	Sensitivity	Max SPL	Freq. Response	Cover Angle	Dimension	Net Weight
	150W	113±3dB	135±2dB	400Hz-8kHz	horizontal 70°x vertical 50°	240x380x300mm	7.7kg

LRAS1515

150W Acoustic Hailing Device



- SPL (1m) is up to 136dB
- Up to 700m clear sound transmission
- The sound wave is directional to avoid sound distortion caused by echo interference
- Optimized sound wave dispelling and waveguide structure to pass the sound through the siren, engine noise and noisy crowd, and be accurately heard by each target person
- The sound beam angle is 30°
- Handheld and portable, friendly in use and flexible in control



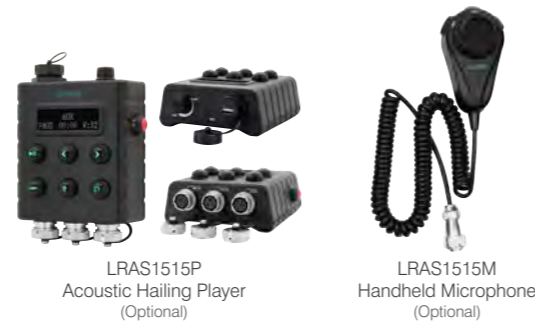
LRAS1515	RMS Power	Impedance	Max SPL	Sensitivity	Freq. Response	Waterproof Level	Cover Angle	Dimension	Net Weight
	150W	4Ω	136±2dB	116±2dB	340Hz-6kHz	IP55	horizontal 30°x vertical 30°	365x373x217mm	6.5kg

LRAS1530

300W Acoustic Hailing Device



- SPL (1m) is up to 142dB
- Up to 1300m clear sound transmission
- The sound wave is directional to avoid sound distortion caused by echo interference
- Optimized sound wave dispelling and waveguide structure to pass the sound through the siren, engine noise and noisy crowd, and be accurately heard by each target person
- The sound beam angle is 30°
- Handheld and portable, friendly in use and flexible in control



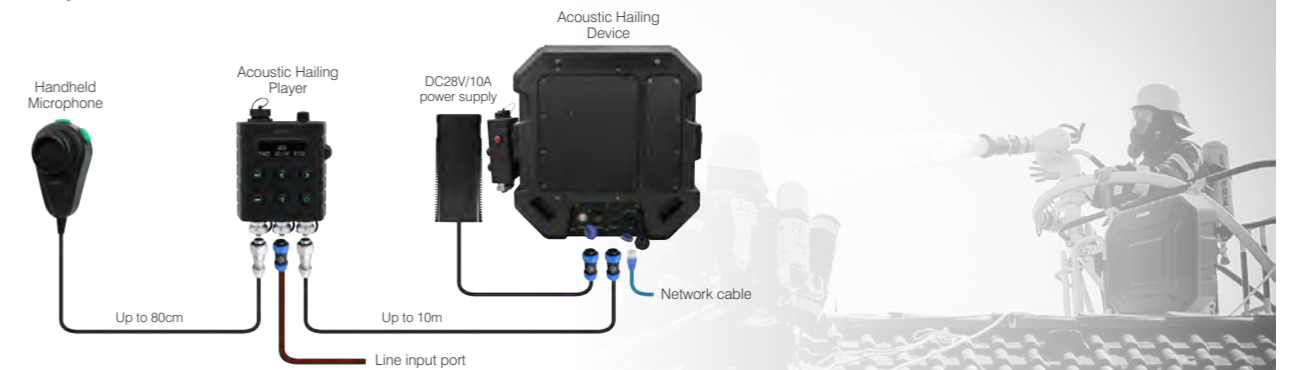
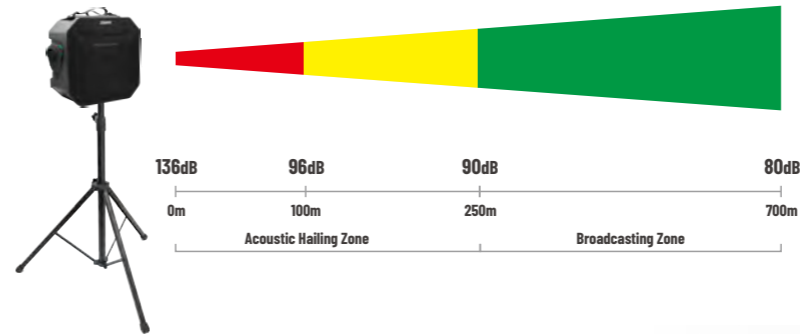
LRAS1530	RMS Power	Max SPL	Sensitivity	Freq. Response	STIPA	Cover Angle	Dimension	Net Weight
	300W/8Ω	139±2dB	116±2dB	400Hz-6kHz	0.85	horizontal 30°x vertical 30°	645x175x365mm	12kg

MAG1515N

150W Network Acoustic Hailing Device



- SPL (1m) is up to 136dB
- Up to 700m clear sound transmission
- Support USB as audio source
- Built-in network interface
- Support one key to play the alarm or dispel sound
- The sound wave is directional to avoid sound distortion caused by echo interference
- Optimized sound wave dispelling and waveguide structure to pass the sound through the siren, engine noise and noisy crowd, and be accurately heard by each target person
- The sound beam angle is 30°
- Handheld and portable, friendly in use and flexible in control

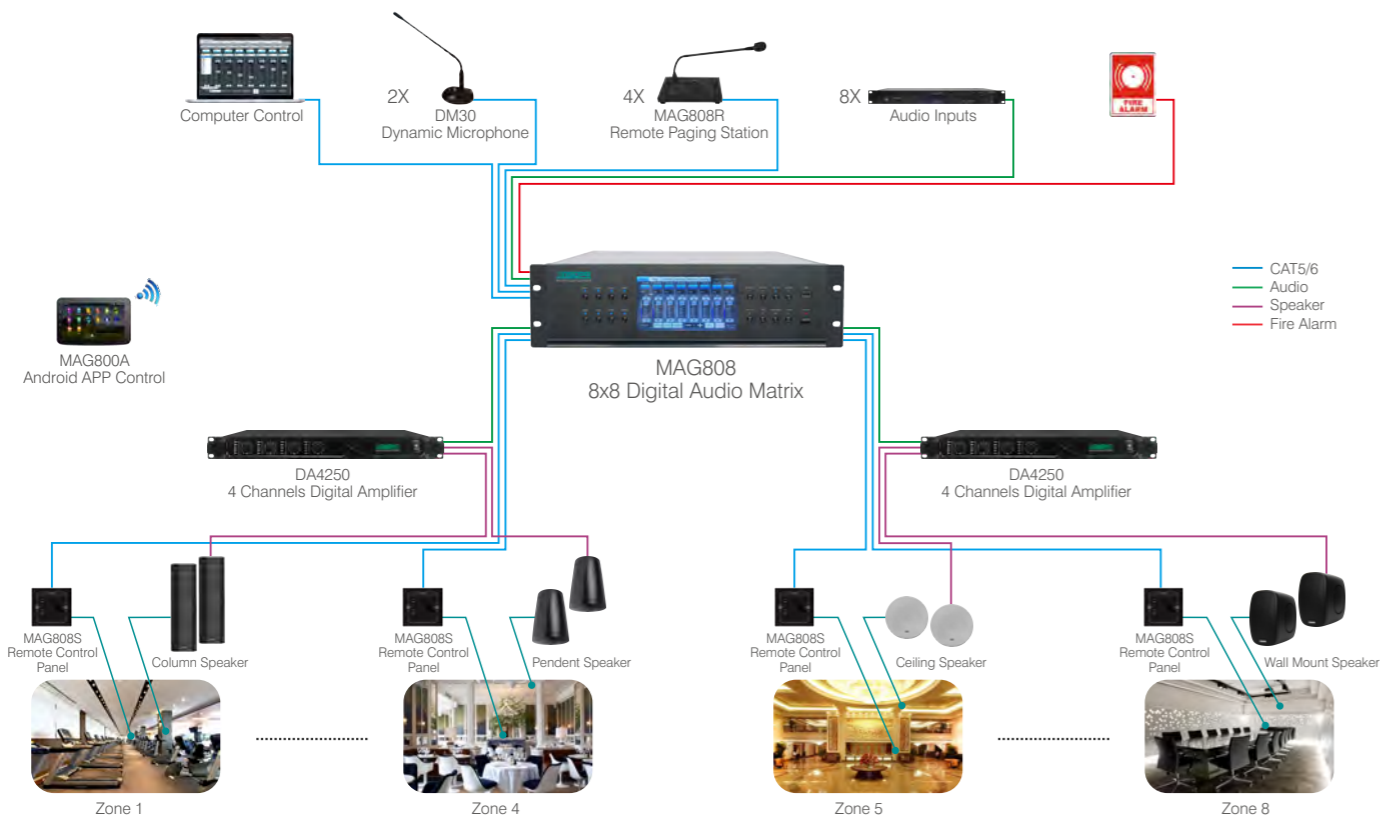


MAG1515N	RMS Power	Impedance	Max SPL	Sensitivity	Freq. Response	Waterproof Level	Cover Angle	Dimension	Net Weight
	150W	4Ω	136±2dB	116±2dB	340Hz-6kHz	IP55	horizontal 30°x vertical 30°	365x373x217mm	7.8kg

MAG808 8x8 Digital Audio Matrix



- 8x8 digital audio balanced input & output
- Balanced input & output with EQ control
- Built-in FM, MP3, Timing, 2 Mic (with phantom)
- 1 EMC input & output, 8 dry contact inputs
- 7" touch screen, easy to use
- 4 remote paging stations
- Remote panel control for each zone
- Computer & Android APP control



Home page



Setting

- Applications: Medium to large size venues: shopping mall, supermarket, hotel, factory, etc.

	Line Input Sensitivity	Line Input Freq.	Mic Input Sensitivity	Mic Input Freq.	Output Distortion	Dimension	Net Weight
MAG808	250mV	20Hz-20kHz (±3dB)	10mV	80Hz-10kHz (±3dB)	<1%, 1kHz	484x375x132mm	10kg

MAG808C

Remote Control Panel with Mic



- RJ45 port power and control interface
- Balanced audio input and output
- Clear audio signal level indicator
- Independent volume control and audio source selection for each zone
- MP3 via USB input with independent volume control
- 1 line input and 1 MIC input with independent volume control
- Bottom box size: 144x80x45mm

MAG808S

Mini Remote Control Panel



- RJ45 port power and control interface
- Balanced audio input and output
- Independent volume control and audio source selection for each zone
- 86 case for in wall installation
- Bottom box size: 86x86x33mm

MAG808R

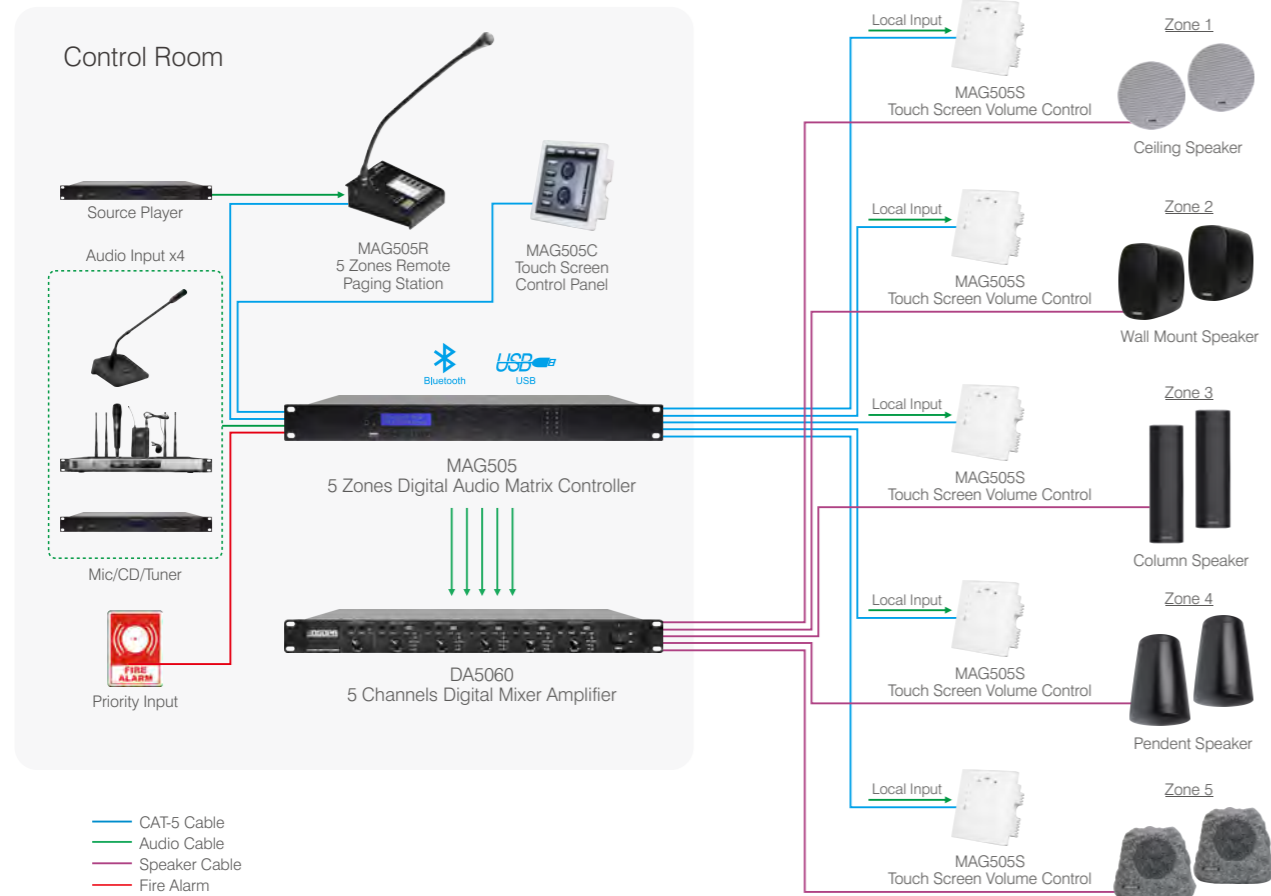
8 Zones Remote Paging Microphone



- 8 zones control
- Clear signal level indication
- Built-in chime signal for paging
- Adjustable volume of MIC and chime
- Adopts D626 goose-neck microphone
- RJ45 interface, support long distance transfer

	Line Input Sensitivity	Line Input Freq.	Mic Input Sensitivity	Mic Input Freq.	Output Distortion	Dimension	Net Weight
MAG808C	300±50mV	20Hz-20kHz (±3dB)	10±2mV	100Hz-15kHz (±3dB)	<0.5%, 1kHz	145x80x47mm	0.4kg
MAG808S	-	-	-	-	-	86x86x42mm	0.16kg
MAG808R	-	-	45±5mV	100Hz-15kHz (±3dB)	<0.5%, 1kHz	231.5x145.5x67.5mm	1.75kg

5 Channels Digital Audio Matrix System



MAG505 5 Zones Digital Audio Matrix Controller



- 3 AUX input and 5 AUX output
- 2 XLR paging microphone
- Support USB as audio source
- With output source and level indicator
- With 3.5mm monitor jack and monitor zone selector
- Support phantom power 48V for paging mic
- 5 RJ45 interface for connecting touch screen control panel
- 1 RJ45 interface for paging station
- With Mute and EMC input
- Power supply: AC100V-250V/50Hz

MAG505C Touch Screen Control Panel



- Standard 86 case touch screen panel
- Remote control the main function of matrix host
- Support power On/Off remote control
- Control the light, projector, volume, video
- With RS232 and RS485 interface
- Power supply: DC24V

MAG505S Touch Screen Volume Control



- Full touch screen volume control
- With audio source select function
- Support one-key mute function
- Power supply: DC24V

MAG505R 5 Zones Remote Paging Station



- With signal indicator for working status
- Five zones selection and all zone selection
- With 1 Aux input
- Aux input/Mic/Chime with individual adjustment
- 1 RJ-45 for connection with host
- Power supply: DC24V

DA5060 5x60W 5 Channels Digital Mixer Amplifier



- 5x60W 5 channels digital power amplifier
- 100V or 4-16Ω speaker output
- 1 paging microphone with phantom power 48V
- Individual volume control for each channel and mic
- Each zone and mic with bass/treble adjustment
- With 5 RCA and 5 phoenix zone input
- With 1 AUX input and 1 24V EMC input
- Power supply: AC170-260V/50Hz

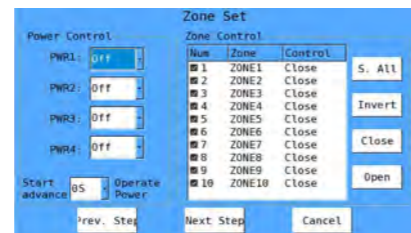
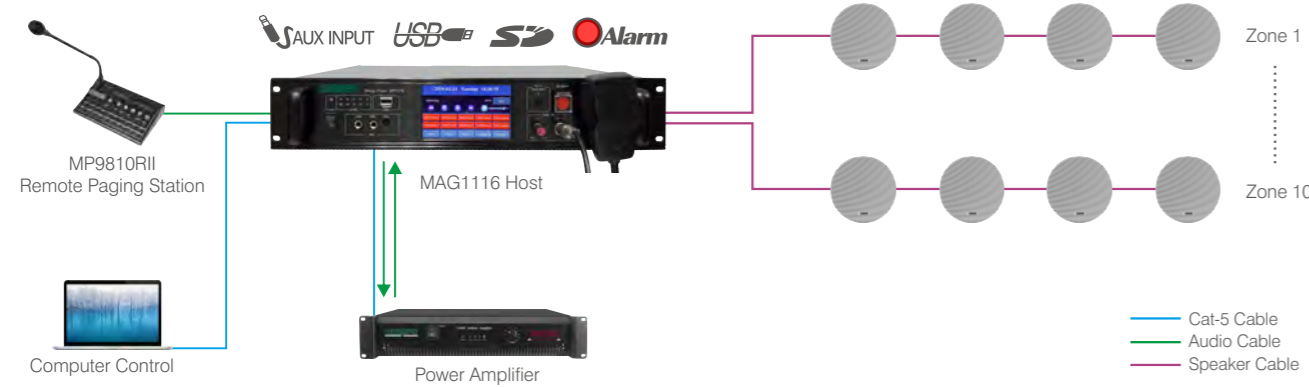
MAG1116 10 Zones Intelligent PA System

MAG1116 is a powerful intelligent PA system center. It is a 10 zones PA system solution. It has all the functions needed for a normal PA project, such as background music playing, programed audio playing, remote paging, fire alarm, etc.

It supports 5 audio inputs and 10 zones outputs. The audio sources support AUX inputs, USB,SD, Tuner, etc. It supports AB line speaker outputs (background music & emergency broadcast).

The system supports remote paging and programed timer function, which makes it easier for the management of the daily running.

The use of industrial PCB along with DSPPA professional design makes the system reliable and stable. It is a cost-effective and reliable PA solution for small to medium venues like school, supermarket, factory, etc.



Software

MAG1116
10 Zones Intelligent Public Address Center



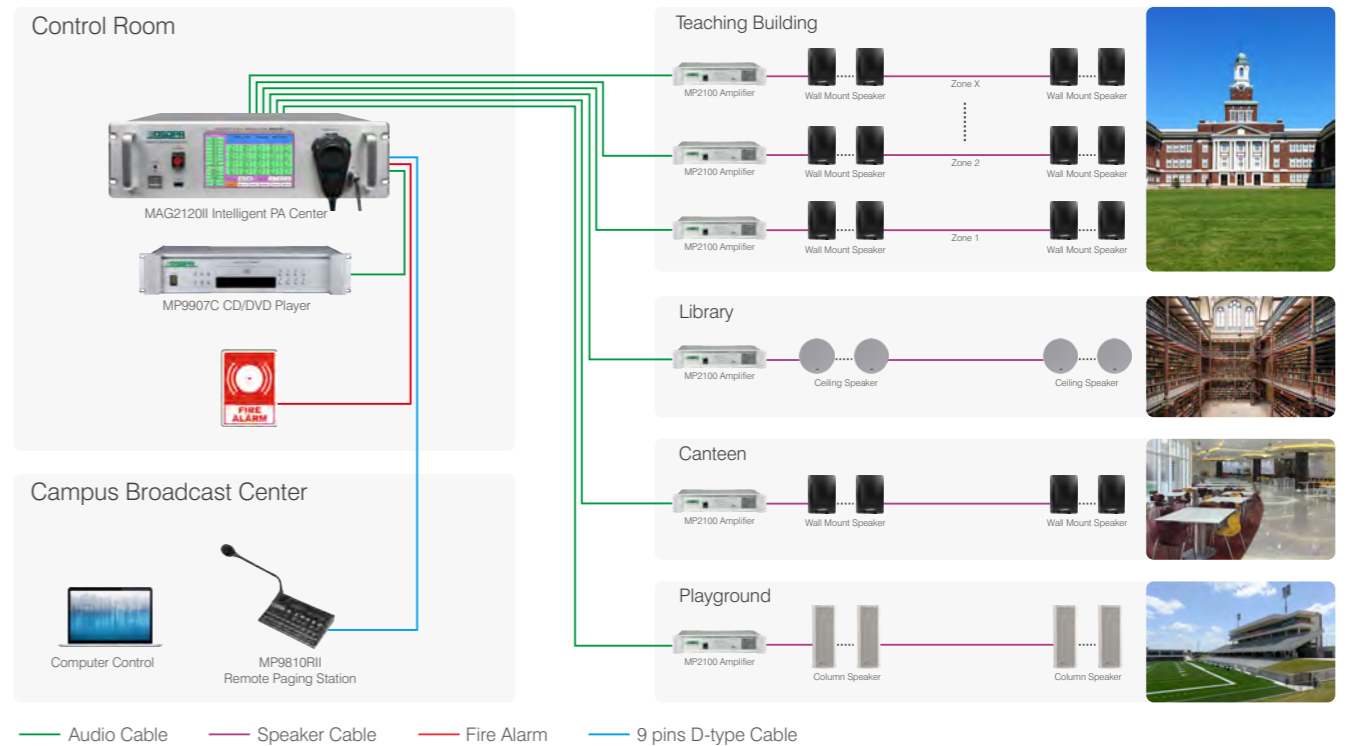
MP9810R11
Remote Paging Station



MAG2120II/MAG2140II 20/40 Zones Intelligent PA System

MAG2120II (MAG2140II) is a powerful intelligent PA system center. It is an 8x20 (8x40) audio matrix. It has all the functions needed for a normal PA project, such as background music playing, programed audio playing, remote paging, fire alarm, etc.

It supports 8 audio inputs and 20 (40) audio outputs. The audio sources support AUX inputs, USB, Tuner, built-in memory, etc. The system supports remote paging and remote computer remote control.



PC Software



Android Software

MAG2120II/MAG2140II
20/40 Zones Intelligent Public Address Center



MAG2120II

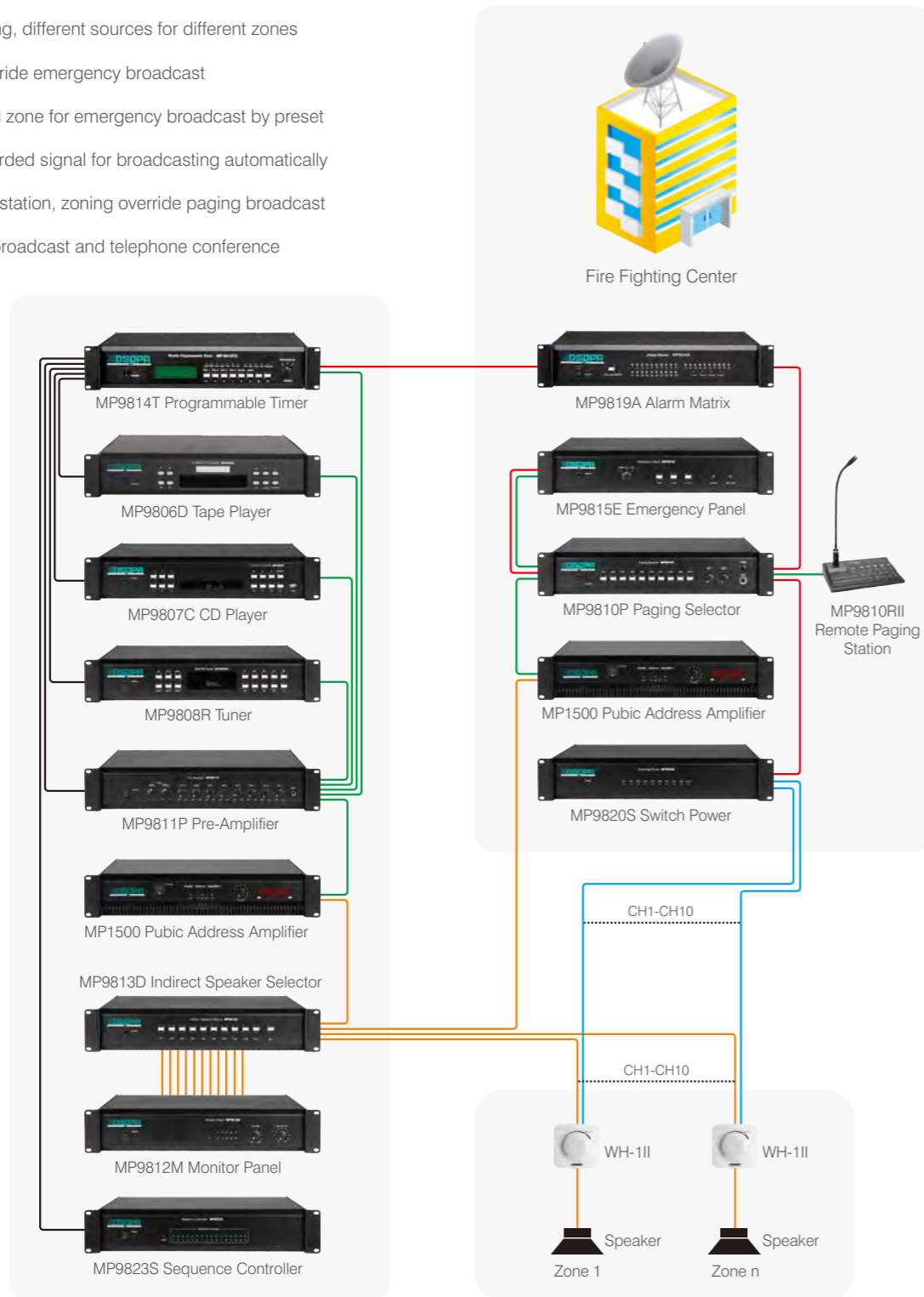
MAG2140II

MP9810R11
Remote Paging Station



MP98 Series

- The classical intelligent PA system with advantage technology and most powerful function
- Auto running by timing program, auto M/S amplifier switching, fault auto alarming, support unattended operation
- Support zoning management
- Support matrix zoning, different sources for different zones
- Support zoning override emergency broadcast
- Auto trigger involved zone for emergency broadcast by preset
- Activate built-in recorded signal for broadcasting automatically
- Support remote call station, zoning override paging broadcast
- Support telephone broadcast and telephone conference



MP981715T
PA System Program Timing Player



MP9807C
PA System MP3 CD/VCD/DVD Player



MP9808R
PA System Digital AM/FM Tuner



MP9810H
10 Channels Paging Line Concentrator



MP9810P
10 Channels Paging Selector



MP9811P
5 MIC 3 AUX Input Pre-amplifier



MP9812M
10 Channels Monitor Panel



MP9813C
Speaker Selector



MP9813D
10 Channels Indirect Speaker Selector



MP9815E
PA System Emergency



MP9819A
Alarm Matrix



MP9820S
PA System 10 Channels Switching Power



MP9821M
M&S Amplifier Auto Switcher



MP9822AII
Emergency Power Alertor (Optional)



MP9822BII
Emergency Battery



MP9822EII
Emergency Power System



MP9823S
PA System Sequence Controller



MP9824L
Lightning Conductor

Intelligent Music System



AM8328 8 Zones Intelligent Audio Music System



- 8 zones independent output, can extend to 72 zones at most
- High-power output for living-room or garden with rated power 2x100W
- Zone 1: 2x100W/8Ω, Zone 2-8: 2x30W/8Ω/zone
- Both programs and partitions can be renamed
- 16-million pixel 7.0" TFT true-color capacitance display and touch screen
- Rich audio sources: 8 internet modules (supports internet music and internet radio)
- Built-in MP3 player, memory card, 3 audio source inputs
- IP network music amplifier, support DLNA and RS-232
- Infrared learning function, remote control of external audio equipment
- Self-developed software, support wireless control

AM8300 Intelligent Audio Zones Extender



- Built-in 4 channel amplifiers, 2x30W/8Ω
- Linkage to the host through switcher, support "hand in hand" cascade linkage
- Support wireless control by network equipment
- Power supply: 100V-240V/50Hz/60Hz

BM828R11 Intelligent Audio Control Panel



- 3.5" TFT LCD display screen, fully touchable operation
- With the operational functions of the AM8318, AM8328, including selection of sound sources and playing control of sound sources
- One BM828R11 controls one partition by means of setting of address
- Control external DVD and TV through the infrared learning function of the host
- Subject to the control and operation by the infrared remote controller
- Controllable distance up to 100 meters

AM8318 8 Zones Stereo Home Music System



- Separate output of 8 zones; each zone can be separately controlled
- Power output: Zone 1: 2x60W/8Ω, Zone 2-8: 2x30W/8Ω/zone
- Unique appearance design, 5" TFT HD color touch screen
- Support network music, network radio, built-in MP3 and memory card
- Support 1 DVD audio input socket, 2 AUX input socket
- Support DLNA/Airplay wireless playing
- With RS-232 interface and TCP / IP network interface
- Infrared learning function, allowing remote control of external audio equipment
- Integrated interface to control music playing in all rooms or a single room
- Self-developed software, support wireless control